



# After Action Report

## 2008 Spring Bike Festivals

### 1. GENERAL.

In May 2008, two major motorcycle events were held in Horry County. The Harley Davidson (HD) Spring Rally was held from Friday, May 9 through Sunday, May 18. The Atlantic Beach (AB) Bike Festival was held from Thursday, May 22 through Monday, May 26.

- A. HD Rally. The HD Rally had a total attendance estimated between 225,000 and 275,000.
- B. AB Festival. The AB Festival had a total attendance estimated between 250,000 and 275,000.

This After Action Report (AAR) is designed to document and review the management of these events, as it relates to Horry County Government. While these events impact every jurisdiction in Horry County, this report deals exclusively with the county government's roles and responsibilities.

### 2. PLANNING AND ORGANIZATION

- A. Organizational Structure. To effectively manage these events, Horry County utilized the National Incident Management System (NIMS) process. Planning for the events began months in advance, and continued through the events, with the process being very dynamic in nature.
  - 1) During both events, the Public Safety Director served as the Incident Commander and the County Chief of Police served as the Deputy Incident Commander. (See Appendix A & B – Organizational Charts)
  - 2) During both events, the Operational Period was classified as a 24-hour period, starting at 0600. An Incident Action Plan (IAP) was developed and published for each Operational Period. The IAP was printed and hard copies were distributed to the key event staff.
- B. Emergency Operations Center (EOC). The EOC was staffed each day of the events, with their hours of operation being 1200 – 0200. The EOC staff was limited, with just the necessary representatives present. Their primary role was to monitor the field activities, collect data and prepare the IAP. A secondary role

was to test new procedures for viability in the event of a major disaster. The Emergency Management Department deserves credit for their efforts in effectively managing the EOC.

- C. Technological Integration. One of the major tests that we conducted was the integration of technology in a real-world environment.
  - 1) One of the major integration tests was the automated flow of data from the CAD directly into the GIS mapping system. We tested the ability of the system to populate the Incident Map directly from CAD in a real time environment. While this system worked well, we still experienced a few difficulties with duplicate postings.
  - 2) The automated flow of data from the WebEOC software to the CityWorks software did not function as anticipated. This interface needs more work to ensure its viability and validate our use in a real disaster situation. The system was fully capable of tracking equipment usage, but we had difficulties in capturing personnel costs. More work is needed in this area before we incorporate this into our procedures.

### 3. LAW ENFORCEMENT OPERATIONS

- A. Zone Policing. The Horry County Police Department (HCPD) implemented a new concept for managing the events this year. This concept was referred to as "Zone Policing", as opposed to the previous concept of "Destination Site Policing". Zone Policing allowed for more flexibility and efficiency by allowing the Sergeants to move officers within their Zones to address crowds and specific concerns. This process also made the HCPD officers more visible as they were on the roads more often, driving from one venue to another. In addition, this provided more traffic enforcement opportunities, as evidenced by the increase in traffic citations. Another consequence of this concept was the increased fuel usage. The additional driving requirements resulted in more fuel consumption, which had not been forecasted.
- B. Traffic Enforcement. The HCPD did a tremendous job enforcing traffic. HCPD issued approximately 2500 citations during the HD Rally and 1500 citations during the AB Festival. (See Appendixes C & D – Law Enforcement Summaries) Most of the citations were related to speeding and other moving violations. The Zone Policing concept allowed more officers to enforce traffic regulations.
- C. Air Operations. HCPD employed fixed wing and rotary wing aircraft during both events. Both types of aircraft proved to be beneficial. The fixed wing allowed longer flights and covered traffic and distances very effectively. The helicopter was especially useful during the evening, when the "NiteSun" spotlight

attachment was used to light up various incident scenes. The utilization of air assets was also beneficial in that we were training a new Air Ops Section Chief.

#### 4. **FIRE / RESCUE OPERATIONS**

- A. Overview. Horry County Fire/Rescue (HC F/R) was responsible for providing emergency medical service during the events. To accomplish this task in the most efficient manner, HC F/R contracted for additional ambulance units to support their operations. While all of HC F/R's fleet of ambulances operates at the Advanced Life Support (ALS) level, these contracted ambulances were only required to operate at the Basic Life Support (BLS) level. The benefit of having the additional transport units was somewhat diminished by this, and it resulted in having to dispatch 2 ambulances to numerous calls. In addition, the E911 Computer Aided Dispatch (CAD) system is configured to manage ambulances at the ALS level, and it requires certain work-arounds to have BLS ambulances in the system.
- B. HD Rally Analysis. During the HD Rally, HC F/R responded to 135 motorcycle accidents, with 150 patients. Of this total, we had 10 that required air medevac and we had 3 fatalities. (See Appendix E – HD Rally Medical Analysis)
- C. AB Festival Analysis. During the AB Festival, HC F/R responded to 118 motorcycle accidents, with 128 patients. Of this total, we had 3 that required air medevac and we had 1 fatality. (See Appendix F – AB Festival Medical Analysis)

#### 5. **E911 EMERGENCY COMMUNICATIONS OPERATIONS.**

- A. Dispatch Operations. The E911 Emergency Communications Department provided a dispatcher to the EOC for operational assistance. This position proved to be less important than in previous years. The CAD now provides a great deal of information in an automated process. The telecommunicator in the EOC was able to quickly contact field staff, but this was not frequent. In addition, because the telecommunicator was in the EOC, and not in the E911 Center, they were not always aware of other non-Biker activities that were occurring.
- B. 800 MHz Radio Operations. Overall the 800 MHz radio system performed admirably. The area that we experienced problems was in communicating with the air assets. While the system was fully capable of managing air to ground communications, our planning for talkgroup assignments was not adequate. The HCPD officer in the helicopter needs to talk to Dispatch, the EOC and field staff. We did not get this resolved until several days into the HD Rally.

6. **TEMPORARY VENDING OPERATIONS.**

- A. Overview. Temporary Vending operations were established during both events; however, the HD Rally had significantly more vendors than the AB Festival.
- B. HD Rally. The HD Rally had 394 vendors located in 48 separate locations. (The 2007 HD Rally had 403 vendors, a 2% reduction.) The vendors continued to be more spread out than during previous rallies, resulting in somewhat less traffic congestion. The South Strand Region had 104, the North Strand Region had 250, and the Western Region had 40.
- 1) Noise making vendors, specifically "Dyno" operators, were notified that they were required to close by 9:00 pm, in accordance with the county's noise enforcement ordinance.
  - 2) In addition, 10 adult entertainment permits were issued for this event. Prior to the rally, public safety officials spoke with the establishments hosting the adult entertainment activities, and ensured standards were understood. While a number of events were scheduled and advertised, a significant percentage were cancelled, or just never occurred.
  - 3) One area where we had some challenges was at the "Beaver Bar". The owner seemed to have a misunderstanding of what activities required a Temporary Vending Permit. The Planning & Zoning Department did an excellent job monitoring the situation and ensuring compliance.
  - 4) Another area that generated some concern was an "Exotic Animal" vendor. This vendor had a collection of exotic animals, including tiger cubs, and for a donation would take a photograph with the patron holding the animal. While this vendor had the necessary federal certifications, there were concerns regarding the appropriateness of the location and the best interests of the animals.
- C. AB Festival. The AB Festival had 36 vendors located in 9 separate locations. (The 2007 AB Festival had 58 vendors, a 38% reduction.) The South Strand Region had 0, the North Strand Region had 27, and the Western Region had 9.
- 1) The North Myrtle Beach Dragstrip opened and operated during the AB Festival for the first time in several years. There was some confusion regarding on-site emergency response equipment. This issue was resolved, but it did cause unnecessary problems.
  - 2) The traffic management at "Red Line Sports" on US Highway 501 was managed better this year. This was one of the busiest vendor locations for the AB Festival, and the SC Highway Patrol took proactive steps to

manage the traffic into this venue, and it resulted in less congestion on US Highway 501.

7. **NON-SPECIFIC OPERATIONS.**

- A. **Equipment Utilization.** In support of the events, we utilize specific equipment, such as Variable Message Signs and Light Sets. These assets are deployed to assist our operations, and protect the public. When these assets are deployed for an extended period, it is necessary to conduct daily maintenance on them. This proved to be a challenge, as we had untrained staff assigned to some of the equipment. We met our requirements, but we need to improve our methods.
- B. **Rest & Refreshment Program.** A new program that we implemented this spring was the establishment of a Rest & Refreshment Program. The HCPD provided food and refreshments at the South and North Precinct facilities. As officers were moving within their Zones, they were able to take a break and stop at the Precinct facility. Each precinct had a designated staff member there to manage the program. We invited any public safety official working the events to stop and partake of the program, and the SC Highway Patrol was extremely appreciative.
- C. **Public Safety Assistance Program.** This was a program that we started at some mid-point of the HD Rally. We had a Sheriff's Deputy from Ohio who was participating in the Rally, and was injured in an accident. The Sheriff's Office "adopted" him, and provided assistance and comfort while he was in the hospital. They also assisted him in getting travel arrangements so he could get home in a timely manner. We made some plans to expand on this concept, and designated a position within HCPD, HCSO and HCF/R to assist any public safety official injured in the events.

8. **RECOMMENDATIONS FOR SPRING 2009 EVENTS.**

- A. **Assumptions.** In order to adequately plan for Spring 2009, I need to make some basic planning assumptions. These assumptions are purely for planning purposes, as it is prudent for us to plan for a worst-case scenario. These assumptions are not reflections of any current political discussions, but are solely for Horry County staff members to begin their planning efforts.
  - 1) The 2009 HD Rally will occur at the same time, and with the same level of participation as the 2008 HD Rally. All 2008 destination sites and vendor locations will be the same, with additional areas possible.
  - 2) The 2009 AB Festival will occur at the same time, and with the same level of participation as the 2008 AB Festival. The main focus of the AB

Festival will remain the same, with the possibility that there will be new areas of interest.

- 3) External resources that were available in 2008 will be available in 2009. Additional resources that we need will be available from out-of-county locations, and they will be willing to participate.

#### B. Planning and Organization.

- 1) **Organizational Structure.** I recommend that Horry County Public Safety utilize the NIMS process to manage the events again. This system is an excellent method of event management, and it provides an excellent training opportunity to use it in a large scale event.
  - I recommend that the Public Safety Director be designated as the Incident Commander, and the Chief of Police be designated as the Deputy Incident Commander.
  - I recommend that we consider changing the operational period from 24-hours to a longer period, such as 5 days. Much of our scheduling is done on a multi-day basis, and this would alleviate the need for publishing an IAP each day.
  - I recommend that we develop the IAP in a .pdf format, and publish it on the County Intranet, so that field staff would be able to have access to it in a timely manner. They would also have the total information package, including all the ICS forms and data.
- 2) **EOC Operations.** I recommend that EMD continue to open and manage the EOC. Having a single coordinating element provides a tremendous benefit, both for the management of the events, and for the training value it delivers. I recommend that the hours of 1200 to 0200 remain the same. The area that should be reviewed and improved on is how to capture data during the time the EOC is not operational. While the volume is not the same as during the afternoon and evening, there are still activities occurring.
- 3) **Technology Integration.** I recommend that EMD and IT/GIS work with the software vendors to improve the interface between WebEOC and CityWorks. The concept that we want to implement is appropriate, and we need to make this a priority. With a commitment from our staff and from the vendors, we should be ready to test a new interface by the 2009 events.

#### C. Law Enforcement Operations.

- 1) **Zone Policing.** I recommend that HCPD employ the Zone Policing concept again next year. This concept proved to be very effective, and the Front Line Supervisors proved to be well suited to respond to any situation that arose in their area of responsibility. Additionally, I recommend that we develop a method of capturing fuel costs associated with the Zone Policing concept. This is necessary to ensure the accuracy of the financial analysis.
- 2) **Traffic Enforcement.** While traffic enforcement was increased with the utilization of Zone Policing, we need to make some modifications to improve our efficiency.
  - I recommend that HCPD coordinate with the SC Highway Patrol to ensure we are not duplicating efforts. We need to work with them, and plan for the deployment of resources in a more detailed manner. This would ensure that law enforcement efforts are not congregated in one area.
  - I recommend that HCPD coordinate with other Law Enforcement agencies for the use of traffic checkpoints. We need to consider staffing a daily traffic checkpoint team, and moving it from area to area, based on the situation.
  - I recommend that HCPD coordinate with other Law Enforcement agencies to request using their drug-detection canines. These canines would be a great asset at the traffic checkpoint.
- 3) **Air Operations.** Air Operations need to be used again next year, with an increase in rotary wing assets.
  - I recommend that HCPD coordinate with other law enforcement agencies to request using their helicopter assets. There are several large departments in South Carolina that own and operate helicopters, and we need to coordinate with them for assistance.
  - I recommend that HCPD schedule additional helicopter flights for the evening hours, in support of the units on the ground.
- 4) **Sector Enhancements.** I recommend that HCPD consider staffing selected Patrol Sectors with 2-officer units. While the events place additional service demands on the HCPD, we still have an obligation to respond to the "normal" calls for service. By staffing 2-officer units, we can alleviate the requirement for a backup unit to be dispatched to certain calls. This addresses the problem of the backup unit getting held up in traffic.

- D. Fire/Rescue Operations. The additional ambulances proved to be beneficial to HC F/R's efforts. However, to provide a better level of service, we need to make the additional ambulances all ALS certified. This will improve our efficiencies, as we can use the standard CAD incident response configuration for each ambulance. The difficulty of implementing this recommendation is that some of the Rescue Squads cannot deliver ALS service. I offer 2 options for study and consideration:
- 1) I recommend that HC F/R change the Rescue Squad contractual terms to just have them provide an ambulance and a Driver – EMT. HC F/R would then provide a Paramedic and necessary equipment to achieve the ALS standard.
  - 2) I recommend that HC F/R staff additional units in-house to meet the ALS standard. These additional units would be Reserve ambulances, and the staff would be on overtime status. If we utilized this option, our additional costs would be offset by the increased revenue from billings.
- E. E911 Emergency Communications Operations
- 1) Dispatch Operations. I recommend that E911 not staff an EOC position. In lieu of having a telecommunicator at the EOC, I recommend that E911 designate a specific individual on each shift as the EOC Liaison. This position would be responsible for communicating directly with the EOC and keeping information flowing. This position would not be assigned to one of the critical dispatch positions, but would be able to perform this duty as required.
  - 2) 800 MHz Radio System Operations. I recommend that E911 coordinate the talk-group assignments early in the planning process to include the air operations assets. E911 needs to coordinate with the Public Safety Division Safety Officer to ensure radio equipment that is compatible with helicopter radio systems is available.
- F. Temporary Vending Operations.
- 1) Exotic Animals. I recommend that Public Safety review and research this situation, and determine if the County Temporary Vending Ordinance needs to be revised.
  - 2) Special Event Permits. I recommend that the roles and responsibilities regarding emergency vehicles need to be more clearly defined when issuing of a Special Event Permit. This would prevent the difficulties we faced at the NMB Dragstrip during the AB Festival.



- 3) Security at Event Venues. I recommend that we consider developing requirements for Vendor Locations to provide SLED-certified security services at their locations. Currently, the vendor locations rely on in-house security or none at all. While we have not had many problems at the vendor locations, it would allow us to focus even more of our resources on traffic enforcement.

G. Non Specific.

- 1) Equipment Utilization. I recommend we develop better procedures for utilizing the county equipment. We need to designate a team to deploy, maintain, and recover this equipment. This team needs to be trained prior to the events and understand their responsibilities. We need to account for this team in the planning process and in the IAP.
- 2) Rest & Refreshment Program. I recommend that we continue the Rest & Refreshment Program, with some enhancements. The Law Enforcement community should continue the Rest & Refreshment Program utilizing the South and North Precinct facilities. We should expand the program to add some form of refreshments at the Hospital Emergency Rooms. We have dedicated rooms for ambulance crews, and we could have a staff member there with food and drinks. Since many crews run constantly, this is the best location to provide this service.
- 3) Public Safety Assistance Program. I recommend that we continue and enhance this program. We need to assist any public safety official who gets injured while visiting our community, not just during the events. We will be looking at further developing this program.
- 4) Detention Center Data. I recommend that we develop a series of metrics to quantify the impact of the events on the operations of J. Reuben Long Detention Facility. Currently we do not accurately capture event-specific information regarding the events' impact on Jail operations.

9. **SUMMARY.**

The 2008 Spring Biker Events were challenging to the Horry County Public Safety Division. However, I believe that the men and women of Horry County's public safety agencies met the challenge in an outstanding fashion. While it is my opinion that we did an excellent job, we need to continue our efforts to improve. We will be using this AAR as a reference point, and will be building on our lessons learned.

While many people have had input to the development of this AAR, I bear full responsibility for any errors and for the final recommendations.

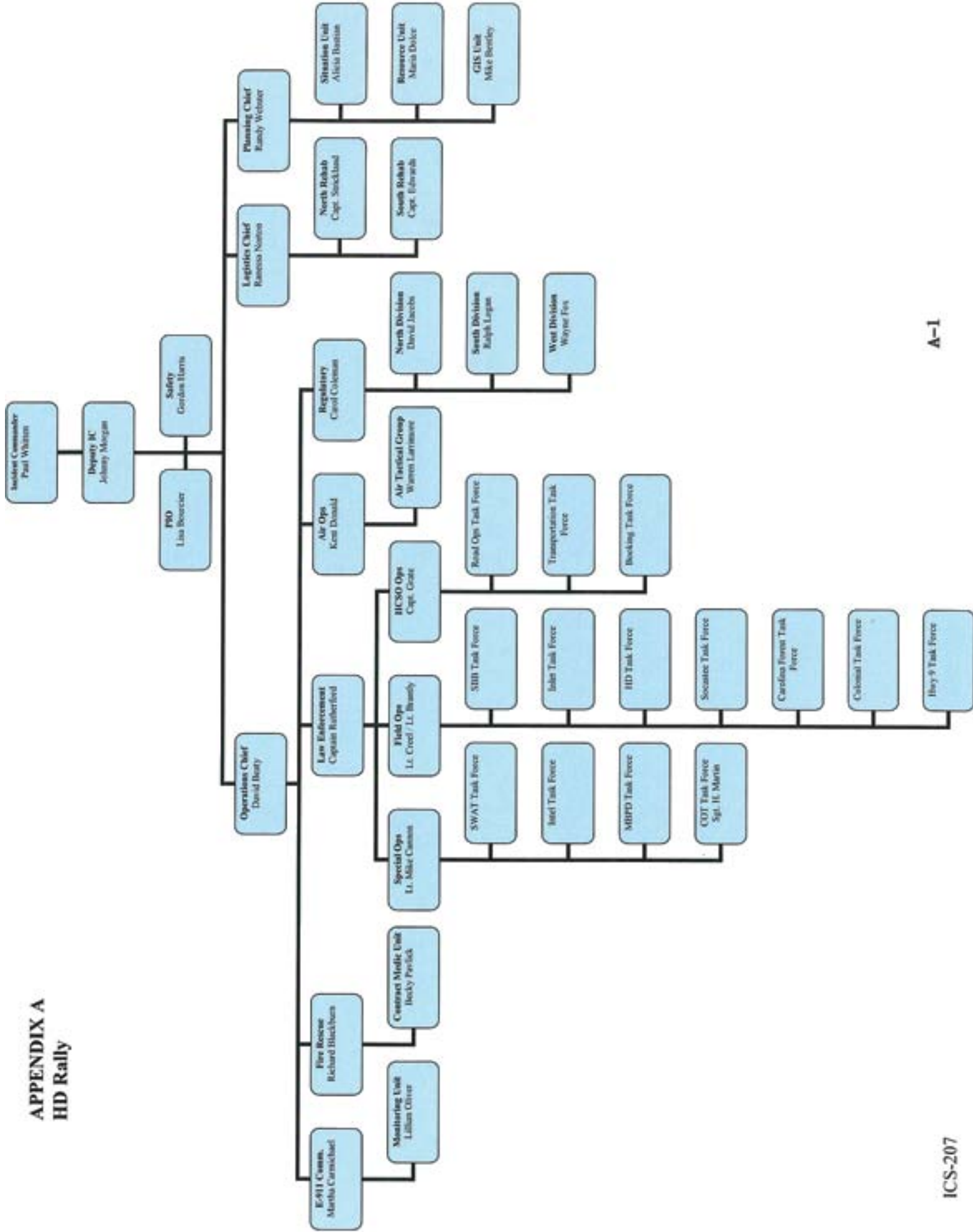
Prepared by:

Paul D. Whitten  
Public Safety Director

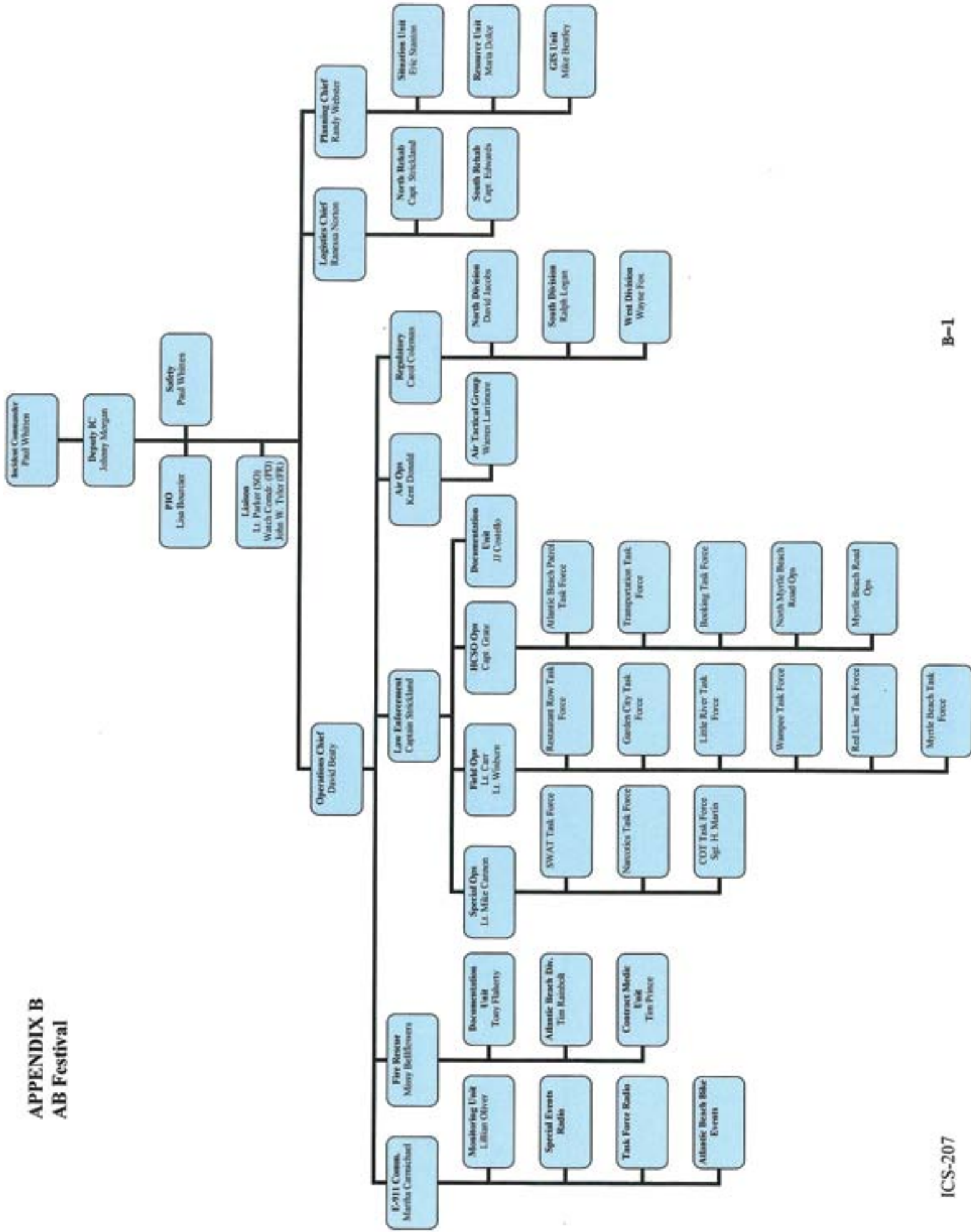
## APPENDIXES

- A. HD Rally – Organizational Chart
- B. AB Festival – Organizational Chart
- C. HD Rally – Law Enforcement Summary
  - Tab 1: Statistical Summary
  - Tab 2: Total Calls for Service
  - Tab 3: Calls for Service in Proximity to Vendors
  - Tab 4: Calls for Service Map
- D. AB Festival – Law Enforcement Summary
  - Tab 1: Statistical Summary
  - Tab 2: Total Calls for Service
  - Tab 3: Calls for Service in Proximity to Vendors
  - Tab 4: Calls for Service Map
- E. HD Rally – Medical Response Summary
  - Tab 1: Road Type Analysis
  - Tab 2: Contract Ambulance Utilization
  - Tab 3: Incidents by Day
  - Tab 4: Injuries by Day
  - Tab 5: Incidents by Hour
  - Tab 6: Incidents by Day by Hour
  - Tab 7: Helicopter Transport Analysis
  - Tab 8: Helicopter Transport Map
  - Tab 9: Fatal Incidents Analysis
  - Tab 10: Fatal Incidents Map
- F. AB Festival – Medical Response Summary
  - Tab 1: Road Type Analysis
  - Tab 2: Contract Ambulance Utilization
  - Tab 3: Incidents by Day
  - Tab 4: Injuries by Day
  - Tab 5: Incidents by Hour
  - Tab 6: Incidents by Day by Hour
  - Tab 7: Helicopter Transport Analysis
  - Tab 8: Helicopter Transport Map
  - Tab 9: Fatal Incidents Analysis
  - Tab 10: Fatal Incidents Map
- G. E911 Call Analysis
- H. HD Rally – Vendor List
  - Tab 1: Vendor Map
- I. AB Festival – Vendor List
  - Tab 1: Vendor Map
- J. Temporary Vending Historical Review
- K. Revenue & Expense Summary

**APPENDIX A**  
**HD Rally**



**APPENDIX B  
AB Festival**



## **APPENDIX C**

### **HD Rally – Law Enforcement Summary**

During the HD Rally, HCPD responded to 4,808 calls for service. In an attempt to maximize our resources, we have captured and analyzed this data. The specific tabs are listed below:

- Tab 1: Statistical Summary. This is a comprehensive list of motorcycle related arrests and citations, issued by HCPD, on a daily basis. For informational purposes, HCPD writes Noise Violation citations for fixed locations. Motorcycle “burnouts” and engine “revving” were cited as Equipment Violations and Improper Start from Stop offenses. This is done to allow these offenders to be pursued under the provisions of the Non-Resident Violators Compact (NRVC), if necessary.
- Tab 2: Calls for Service by Day. This is a chart showing the total number of calls for service per day of the HD Rally. This chart shows ALL calls, not just HD Rally related calls.
- Tab 3: Calls for Service in Proximity to Venues. This is a chart showing the number of calls for service within ½ mile of a designated HD Rally related venue. The purpose of this chart was to attempt to determine if there was a geographical relationship between calls for service and the largest HD Rally venues. There were 4,808 calls for service, and only 372 were within ½ mile of the 7 major venues. Since many of the calls for service within these areas were not event-related, it is my determination that there is not a geographical relationship.
- Tab 4: Calls for Service Map. This is a map showing all calls for service, with the venue sites highlighted.

APPENDIX C, Law Enforcement Summary  
 Tab 1, HD Rally Statistical Summary

Horry County Police Department, 2008 HD Rally Statistical Information												
Day of the Week	Friday	Saturday	Sunday	Monday	Tuesday	Wednesday	Thursday	Friday	Saturday	Sunday	10 Day Total	Totals
Dates	9-May-08	10-May-08	11-May-08	12-May-08	13-May-08	14-May-08	15-May-08	16-May-08	17-May-08	18-May-08	Cases	Cases
Offenses	Cases	Cases	Cases	Cases	Cases	Cases	Cases	Cases	Cases	Cases	Cases	Cases
SPEEDING	125	151	134	146	131	131	116	158	122		1,214	
DRIVERS LICENSE VIOLATIONS	14	12	14	19	14	23	22	20	26	2	166	
IMPROPER TURN	10	13	20		21	21	22	9	22	2	140	
IMPROPER START FROM STOP			14	12	23	30	34		11	3	127	
EQUIPMENT VIOLATION	8	7	4	11	14	26	17	11	11		109	
NO PROOF OF INSURANCE	8	13	14	14	11	7	13	13	9		102	
VEHICLE LICENSE VIOLATION	8	10	8	10	10	8	19	5	4		82	
SEAT BELT VIOLATIONS	13	9	13	3	4	13	1	3	8		67	
DISREGARDING TRAFFIC SIGNAL	3	2	5	12	6	4	7	9	10	2	60	
SIMPLE POSSESSION OF MARIJUANA	1	6	1	4	1	3		2		24	42	
NO REGISTRATION IN POSSESSION	7	1	2	4	3	4	4	7	6		34	
RECKLESS DRIVING	5	1	2	4	3	5		4	6		26	
DRIVING UNDER SUSPENSION	2	1	2	3	3	5		4	2		22	
IMPROPER PASSING	1			4	3		1	5	5		19	
DISORDERLY CONDUCT	1	2	2	1	2	1		3	3	1	16	
DRIVING WITHOUT LIGHTS	1	2	1	1	1		3	1	7		16	
OPEN CONTAINER (IN VEHICLE)	1	3	2	1	1			1	6		15	
IMPROPER DISPLAY OF TAG/EXPIRED TAG	2	1	1	1	2	5					12	
NO MOTORCYCLE LICENSE		1	1	2	2	1	1		3		11	
LITTERING					3	3	1	1	2		10	
OPERATING UNINSURED	2	1	1		1	1		1	1		7	
CHILD RESTRAINT		2	1	1	1				1		6	
IMPROPER PARKING							1		3		5	
HELMET LAW VIOLATIONS		1	1		1	1			1		4	
OTHER	4	4	3	4		2	4	2	1	2	20	
UNSIGNED REGISTRATION	1	1						1	1	1	4	
DUI								1	2		3	
FAIL TO YIELD RIGHT OF WAY				1			1		2		3	
NARCOTIC VIOLATIONS (other than simple possession)	2										3	
FAIL TO USE DUE CARE			1						1		2	
NOISE ORDINANCE VIOLATIONS						1			1		2	
OBSTRUCTION OF TRAFFIC	1	1									2	
VIOLATION SC LIQUOR LAW	1								1		2	







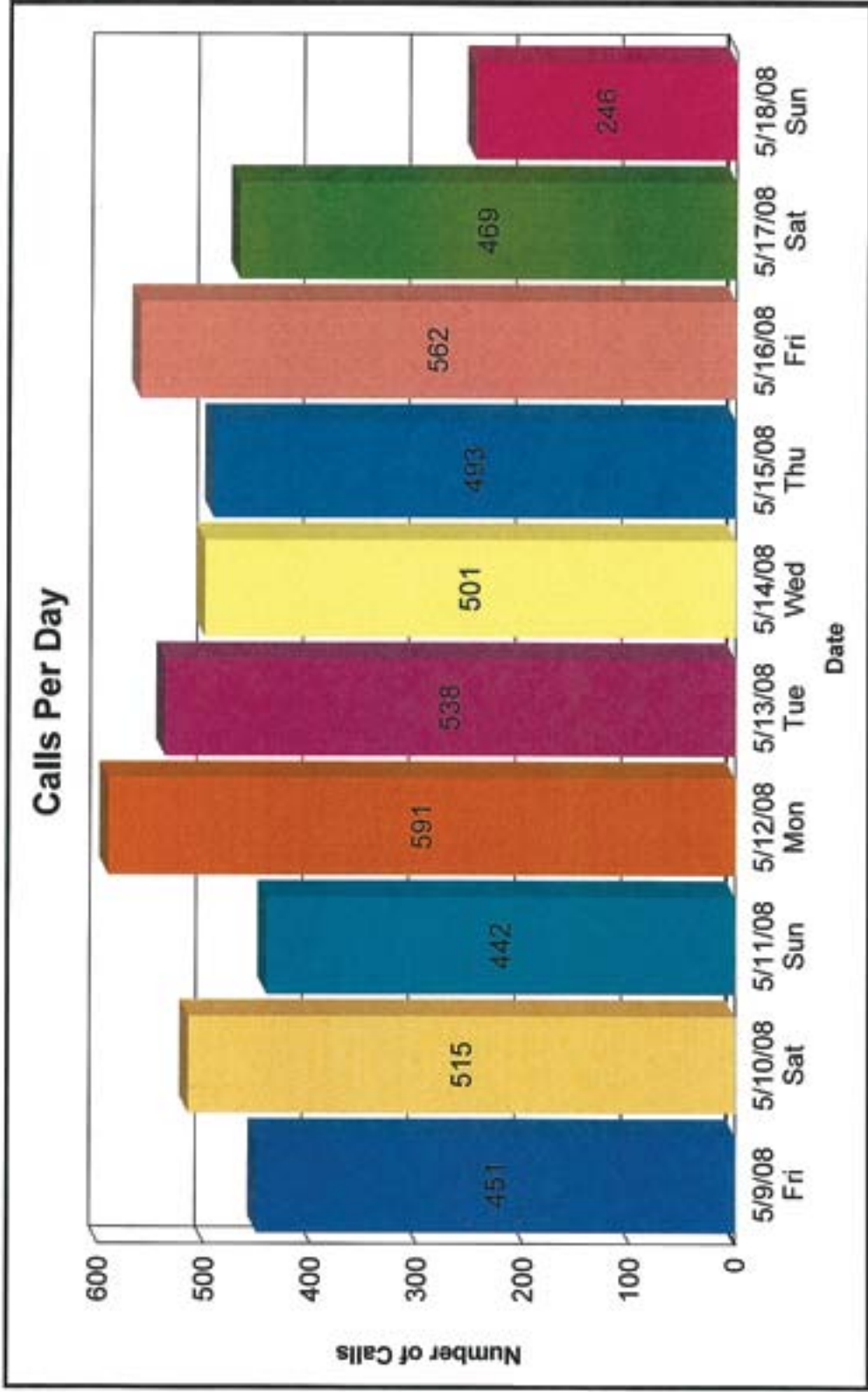
**All Law Enforcement Calls for Service (By Day & Hour)**  
**May 9 6:00 AM - May 18 6:00 PM**  
**Harley Spring Rally 2008**

Incident Description

Create Time

Call Source

Total Calls: 4,808

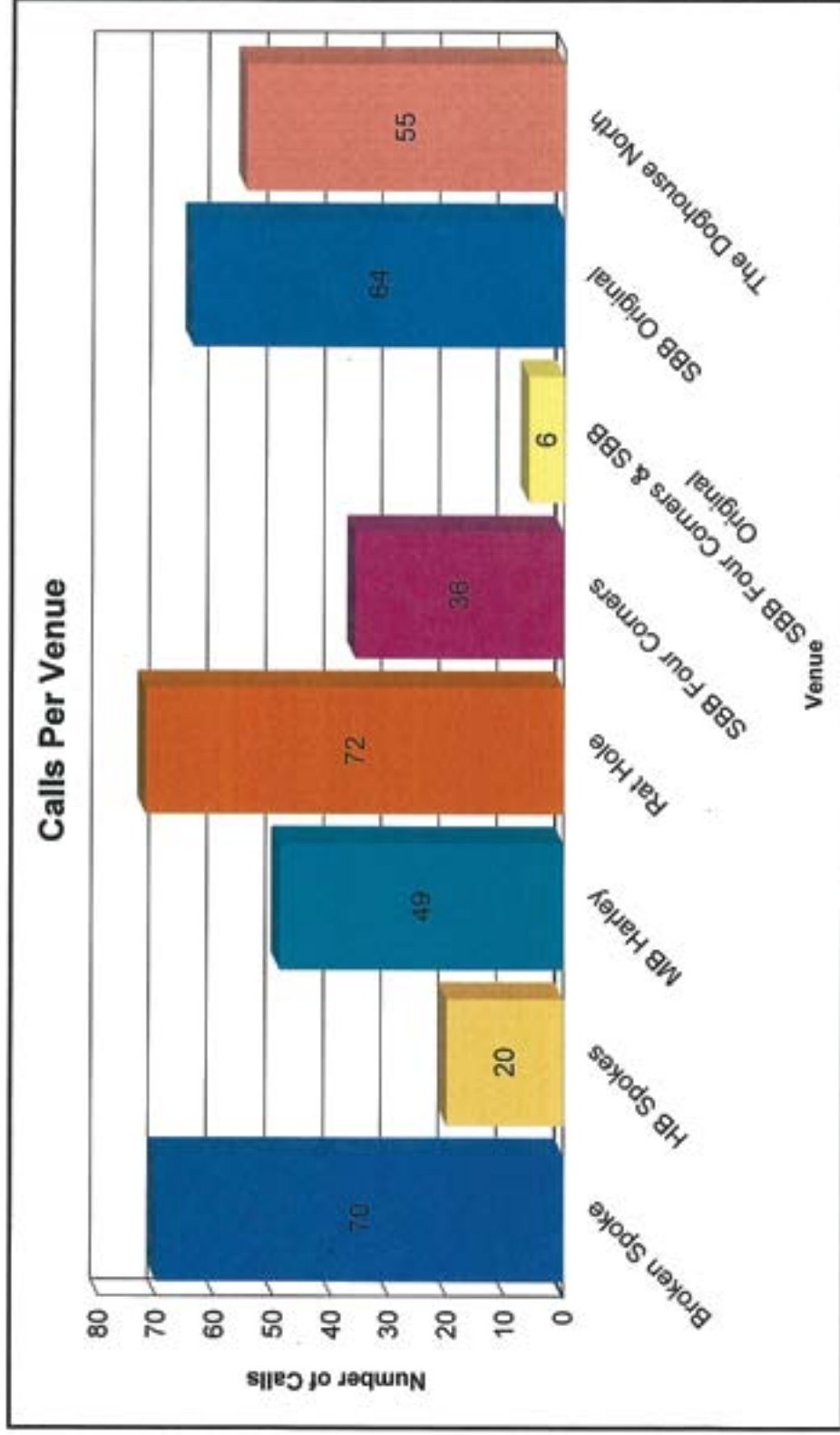


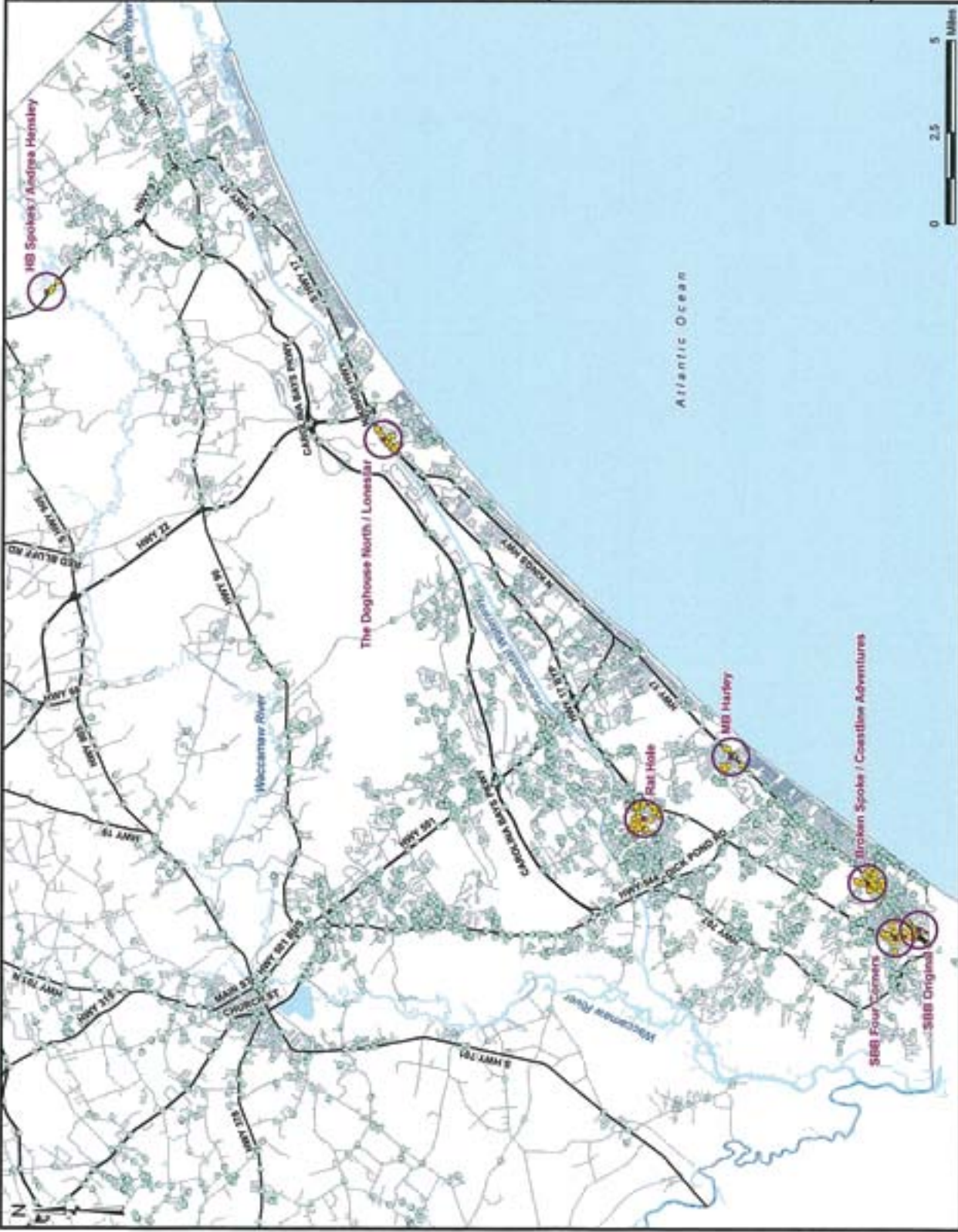


Law Enforcement Calls for Service within 1/2 Mile Radius of Venues (By Venue)  
May 9 6:00 AM - May 18 6:00 PM  
Harley Spring Rally 2008

Incident Description      Create Time      Call Source

Total Calls: 372





**Law Enforcement Calls for Service**  
 May 9 6:00 AM - May 18 6:00 PM  
 Harley Spring Rally 2008  
 Horry County, SC

- Legend**
- Call Within 1/2 Mile of Venue
  - Call Outside 1/2 Mile of Venue
  - Venue Location
  - 1/2 Mile Radius of Venue

**Summary:**  
 372 Calls for Service within 1/2 Mile of Selected Venues  
 84 Venues  
 49 Spokees - 25  
 MS Harley - 20  
 Rat Hole - 41  
 SBB Four Corners - 30  
 SBB Original - 64  
 SBB Four Corners & SBB Original - 4  
 The Doghouse North - 35  
 \*Overlap within SBB Four Corners & SBB Original  
 1/2 Mile Radius



**APPENDIX D**  
**AB Festival – Law Enforcement Summary**

During the AB Festival, HCPD responded to 2,530 calls for service. In an attempt to maximize our resources, we have captured and analyzed this data. The specific tabs are listed below:

- Tab 1: Statistical Summary. This is a comprehensive list of motorcycle related arrests and citations, issued by HCPD, on a daily basis. For informational purposes, HCPD writes Noise Violation citations for fixed locations. Motorcycle “burnouts” and engine “revving” were cited as Equipment Violations and Improper Start from Stop offenses. This is done to allow these offenders to be pursued under the provisions of the Non-Resident Violators Compact (NRVC), if necessary.
- Tab 2: Calls for Service by Day. This is a chart showing the total number of calls for service per day of the AB Festival. This chart shows ALL calls, not just AB Festival related calls.
- Tab 3: Calls for Service in Proximity to Venues. This is a chart showing the number of calls for service within ½ mile of a designated AB Festival related venue. The purpose of this chart was to attempt to determine if there was a geographical relationship between calls for service and the largest AB Festival venues. There were 2,530 calls for service, and 242 were within ½ mile of the 3 major venues. However, since the City of Myrtle Beach was listed as one of our Areas of Interest, and we do not have primary jurisdiction, it is my determination that we cannot use this data. Regarding the other 2 Areas of Interest, it is my determination that there is not a geographical relationship.
- Tab 4: Calls for Service Map. This is a map showing all calls for service, with the venue sites highlighted.

Horry County Police Department, 2008 AB Festival Statistical Information

Day of the Week	Wednesday	Thursday	Friday	Saturday	Sunday	5 Day Total
Dates	21-May-08	22-May-08	23-May-08	24-May-08	25-May-08	Totals
Offenses	Cases	Cases	Cases	Cases	Cases	Cases
ASSAULTS			1		1	2
CHILD ABUSE						0
CHILD RESTRAINT						0
CRIMINAL DOMESTIC VIOLENCE						0
DISORDERLY CONDUCT			3	3	1	7
DISREGARDING TRAFFIC SIGNAL	1	6	5	14	5	31
DRIVERS LICENSE VIOLATIONS	5	14	24	43	33	119
DRIVING LEFT OF CENTER				1		1
DRIVING WITHOUT LIGHTS	2	2	9	3	3	19
DRUG PARAPHERNALIA						0
DUI						0
DRIVING UNDER SUSPENSION			9	2	3	14
EQUIPMENT VIOLATION	1	18	23	19	16	77
FAIL TO USE DUE CARE		1	7	7	8	23
FAIL TO YIELD RIGHT OF WAY	1	1	3	2	3	10
FAIL TO YIELD TO BLUE LIGHTS				1		1
HELMET LAW VIOLATIONS		2	1	1	3	7
IMPROPER BACKING						0
IMPROPER DISPLAY OF TAG/EXPIRED TAG		4	5		1	10
IMPROPER PARKING			14			14
IMPROPER PASSING		3	17	22	3	45
IMPROPER START FROM STOP	7	7	10	4	4	32
IMPROPER TURN	8	6	23	30	15	82
LITTERING				3		3
MALICIOUS DAMAGE						0
MINOR IN POSSESSION OF BEER						0
NARCOTIC VIOLATIONS (other than simple possession)		1	2			3
NOISE ORDINANCE VIOLATIONS						0
NO MOTORCYCLE LICENSE	2	3	3	6	6	20
NO PROOF OF INSURANCE	3	1	7	3	5	19
NO REGISTRATION IN POSSESSION	1	1	4	9	5	20
OBSTRUCTION OF TRAFFIC			4	3	2	9
OPEN CONTAINER (IN VEHICLE)		2	20	3	2	27
OPEN CONTAINER (COUNTY ORDINANCE)						0
OPERATING UNINSURED			3	2		5
POSSESSION OF STOLEN AUTO						0
PUBLIC NUDITY		2		4	1	7
RECKLESS DRIVING	1	3	4	10	10	28
SEAT BELT VIOLATIONS	1	8	22	12	9	52
SHOPLIFTING / PETIT LARCENY						0
SIMPLE POSSESSION OF MARIJUANA		1	7	9	3	20
SPEEDING	56	111	192	222	121	702
UNSIGNED REGISTRATION	1	1				2
VEHICLE LICENSE VIOLATION	1	10	20	22	19	72
VIOLATION SC LIQUOR LAW		1	3	1		5
OTHER		6	5	4	5	20
<b>Totals 2008</b>	<b>91</b>	<b>215</b>	<b>450</b>	<b>465</b>	<b>287</b>	<b>1508</b>
<b>Totals 2007</b>	N/A	N/A	202	275	178	655
<b>Totals 2006</b>	N/A	N/A	208	281	253	742

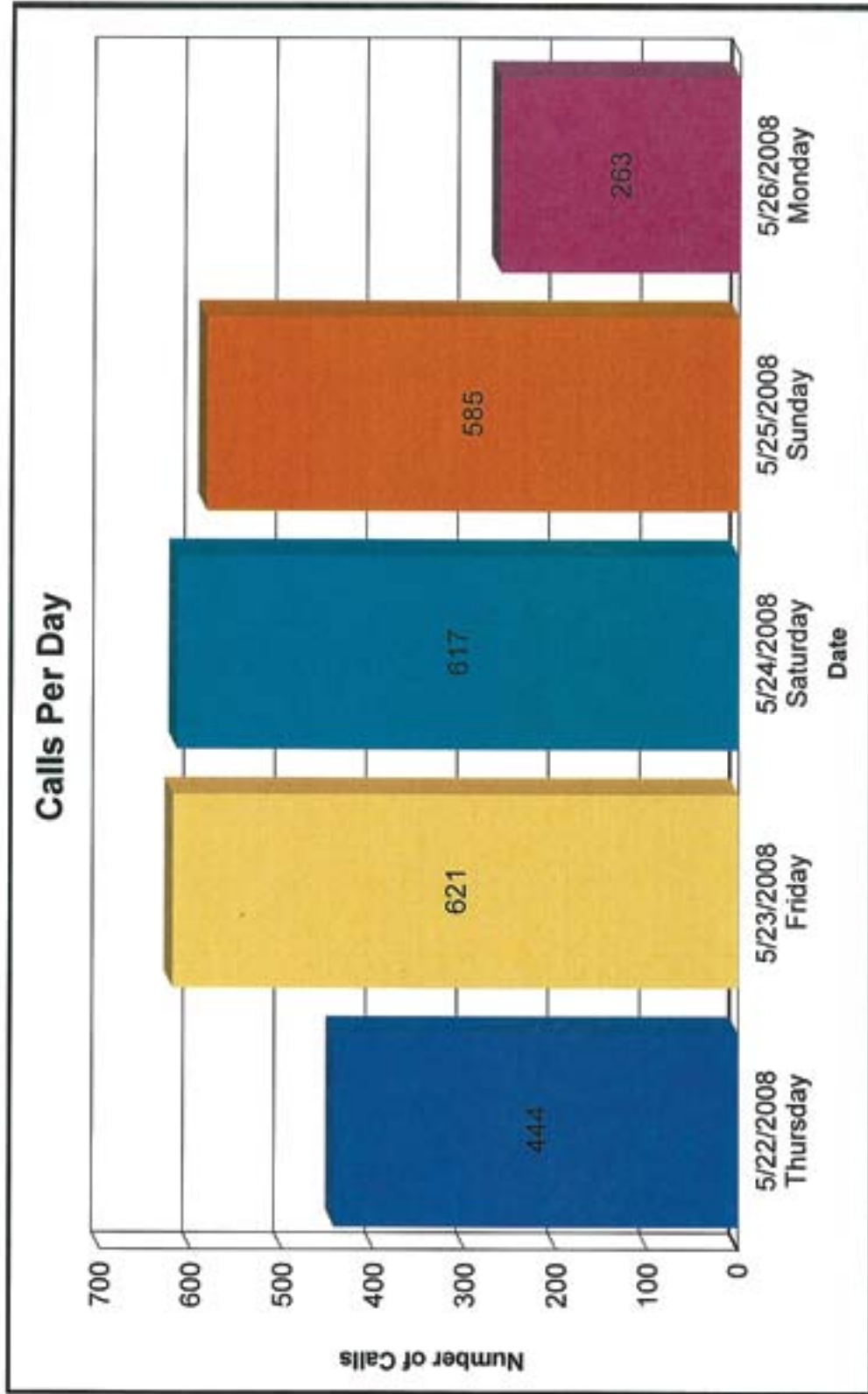


# All Law Enforcement Calls for Service (By Day & Hour) May 22 8:00 AM - May 26 6:00 PM Atlantic Beach Festival 2008

Incident Description  
Total Calls: 2,530

Create Time

Call Source

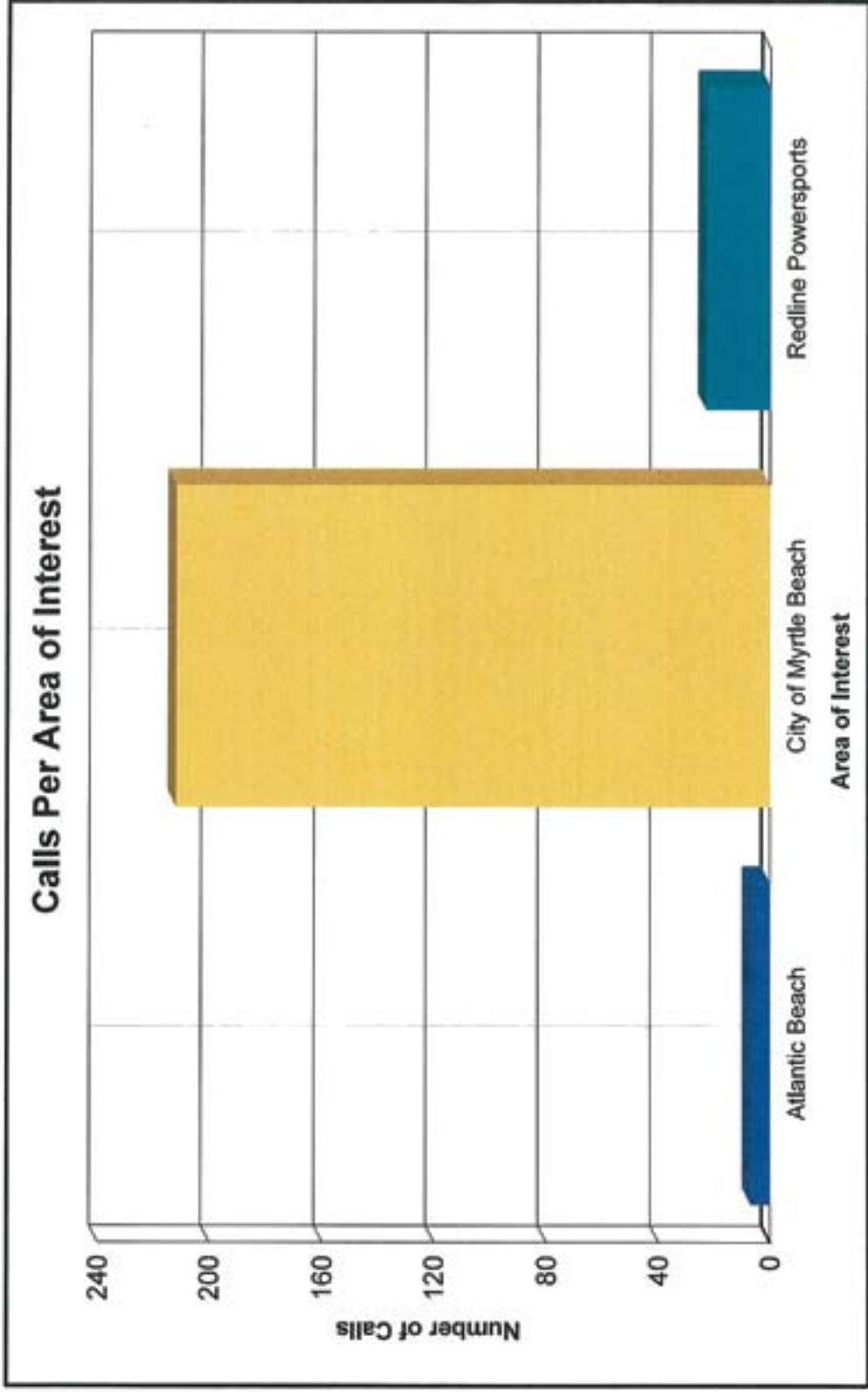


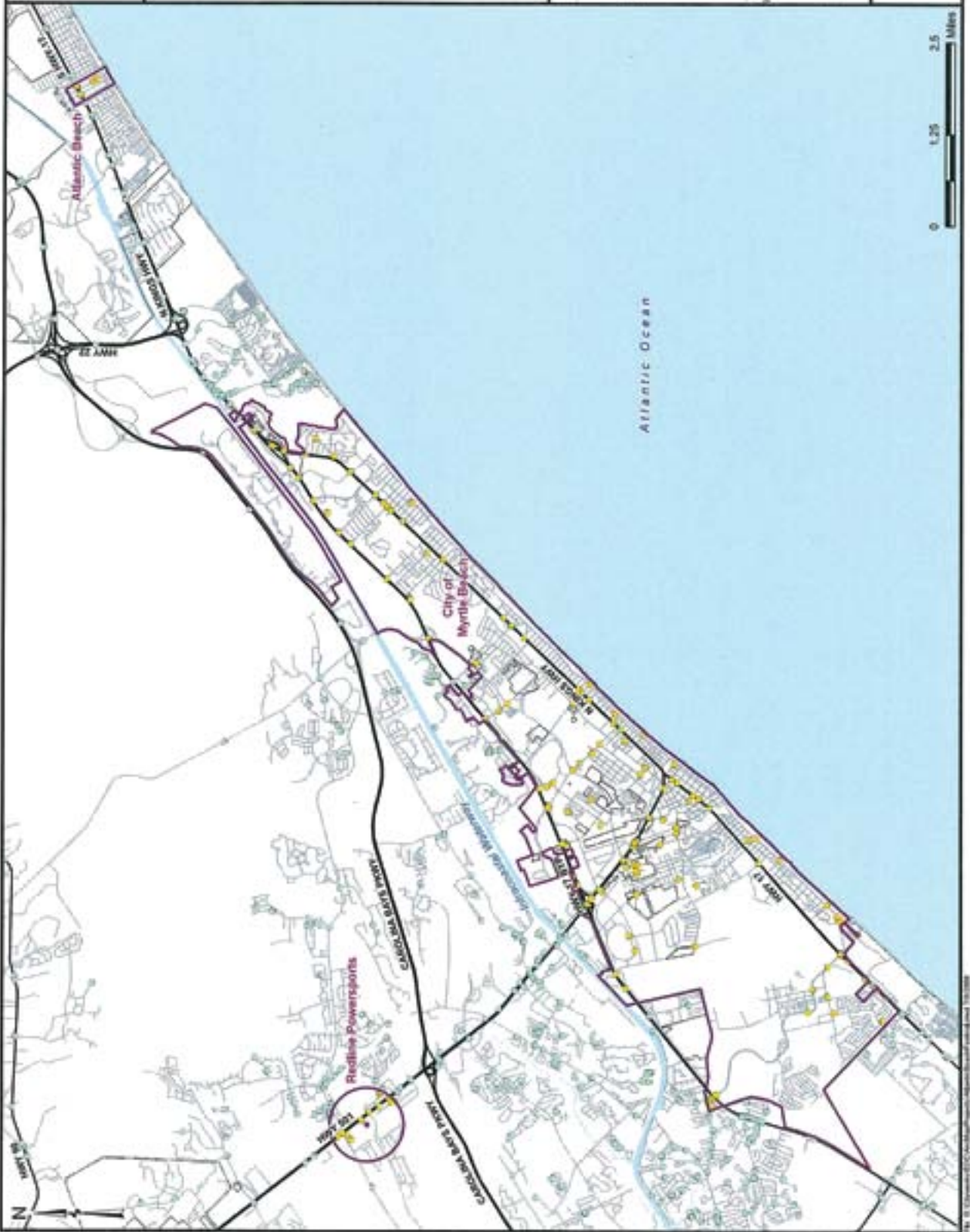


**Law Enforcement Calls for Service within Areas of Interest (By Location & Hour)**  
**May 22 8:00 AM - May 26 6:00 PM**  
**Atlantic Beach Festival 2008**

Incident Description      Create Time      Call Source

Total Calls: 242





Law Enforcement Calls for Service  
 May 22 8:00 AM - May 26 6:00 PM  
 Atlantic Beach Festival 2008  
 Horry County, SC

- Legend**
- Call Within Area of Interest
  - Call Outside Area of Interest
  - Venue Location
  - Area of Interest

**Summary:**  
 242 Calls for Service within Areas of Interest  
 Atlantic Beach - 7  
 City of Myrtle Beach - 212  
 Roadline Powerports - 23





**APPENDIX E**  
**HD Rally – Medical Response Summary**

During the HD Rally, HC F/R responded to 135 motorcycle incidents. These are in addition to our regular call volume. In an attempt to maximize our resources, we capture and analyze the motorcycle accident data. The specific tabs are listed below:

- Tab 1: Road Type Analysis. We list the road descriptions, to determine any trends regarding location of motorcycle incidents.
- Tab 2: Contract Ambulance Utilization. This is a chart showing the days and number of hours we had contract ambulances and the number of hours they were engaged in actual emergency response operations.
- Tab 3: Incidents by Day. This is a chart showing the number of motorcycle incidents per day of the HD Rally.
- Tab 4: Injuries by Day. This is a chart showing the number of motorcycle incident injuries per day of the HD Rally, including the percentage of victims wearing a helmet. We did not quantify the severity of injuries in this chart.
- Tab 5: Incidents by Hour. This is a chart showing the number of motorcycle incidents that occurred each hour of the HD Rally.
- Tab 6: Incidents by Day by Hour. This is an analysis showing the number of motorcycle incidents that occurred each hour, of each day, of the HD Rally.
- Tab 7: Helicopter Transport Analysis. This is a chart showing the number of motorcycle incident patients that required helicopter transport to a Level 1 Trauma Center.
- Tab 8: Helicopter Transport Map. This is a map showing the locations of the motorcycle incidents that required a helicopter transport to a Level 1 Trauma Center.
- Tab 9: Fatal Incidents Analysis. This is a chart showing the number of motorcycle incidents that resulted in a fatality.
- Tab 10: Fatal Incidents Map. This is a map showing the locations of the motorcycle incidents that resulted in a fatality.

This appendix is intended to address motorcycle accidents only. It is very possible that HD Rally participants might have been involved in a non-motorcycle accident, which would not be included in this report. In addition, care must be taken to make generalizations based on a single years' data.



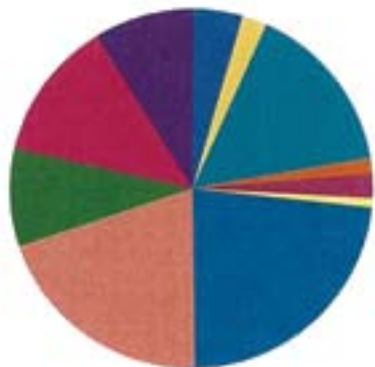
# Harley Spring Rally Motorcycle Incidents

From 5/9/2008 - 5/18/2008

2 lane curve	6
2 lane intersection	3
2 lane straight	21
4 lane bridge	2
4 lane curve	3
4 lane highway	1
4 lane intersection	31
4 lane straight	27
6 lane intersection	12
6 lane straight	17
Parking Lot	12

## Incident Type Road Location Breakdown

(For Motorcycle Wrecks only)



2 lane curve	4.4%
2 lane intersection	2.2%
2 lane straight	15.6%
4 lane bridge	1.5%
4 lane curve	2.2%
4 lane highway	0.7%
4 lane intersection	23.0%
4 lane straight	20.0%
6 lane intersection	8.9%
6 lane straight	12.6%
Parking Lot	8.9%
Total:	100.0%

**APPENDIX E**

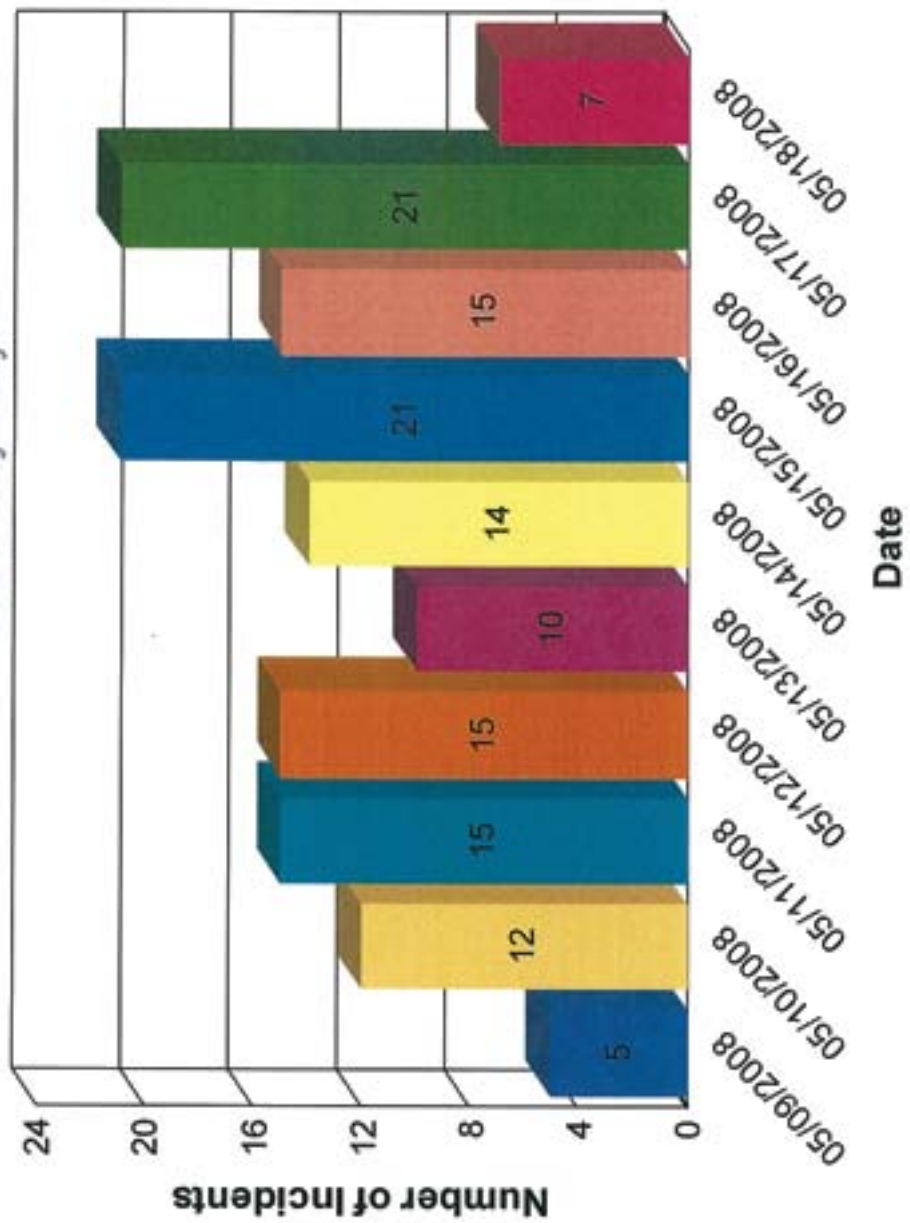
**Tab 2 – Contract Ambulance Utilization**

During the HD Rally, HC F/R contracted for additional ambulances. This chart shows the relationship between the number of hours contracted, and the hours actually engaged in emergency response activities. These ambulances responded to any calls for service, and were not limited to just motorcycle incidents. While there were a very few days where the contracted ambulances were not critical to our operations, most days justified their utilization.

<b>May 2008</b>						
					<b>9</b> Contract Hrs: 38  Utilization Hrs: 6	<b>10</b> Contract Hrs: 38  Utilization Hrs: 11.75
<b>11</b> Contract Hrs: 38  Utilization Hrs: 6	<b>12</b> Contract Hrs: 24  Utilization Hrs: 2	<b>13</b> Contract Hrs: 24  Utilization Hrs: 6.5	<b>14</b> Contract Hrs: 24  Utilization Hrs: 8.25	<b>15</b> Contract Hrs: 57  Utilization Hrs: 7.5	<b>16</b> Contract Hrs: 57  Utilization Hrs: 9	<b>17</b> Contract Hrs: 57  Utilization Hrs: 13.25
<b>18</b> Contract Hrs: 36  Utilization Hrs: 3						

# Harley Spring Rally

Broken by Days





# Harley Spring Rally Motorcycle Accident Incidents

Comparing People to Helmets

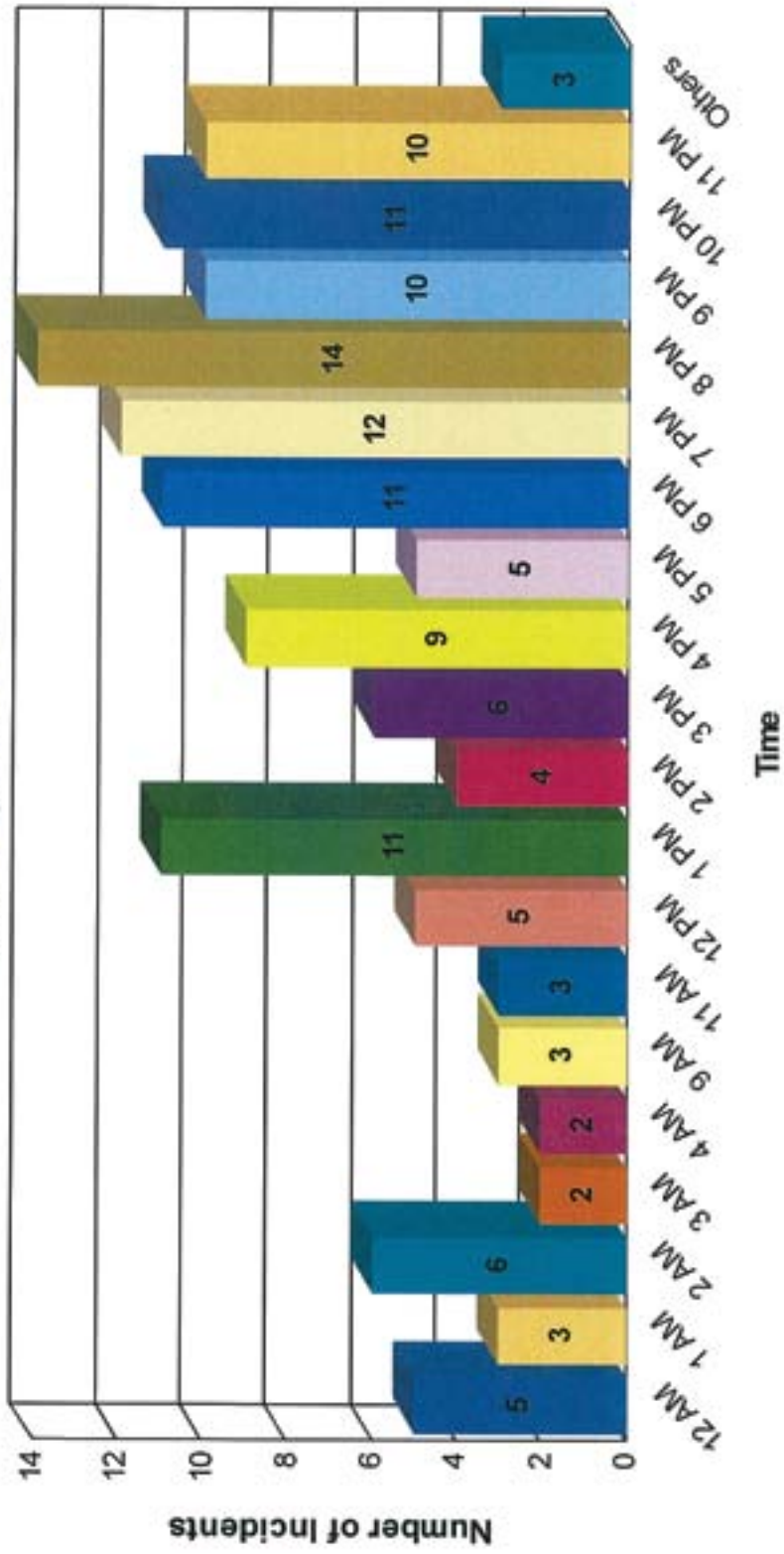
From 5/9/2008 - 5/18/2008

<b>May 09, 2008</b>	Total injuries for day:	4
<b>May 10, 2008</b>	Total injuries for day:	14
<b>May 11, 2008</b>	Total injuries for day:	21
<b>May 12, 2008</b>	Total injuries for day:	19
<b>May 13, 2008</b>	Total injuries for day:	12
<b>May 14, 2008</b>	Total injuries for day:	15
<b>May 15, 2008</b>	Total injuries for day:	22
<b>May 16, 2008</b>	Total injuries for day:	12
<b>May 17, 2008</b>	Total injuries for day:	24
<b>May 18, 2008</b>	Total injuries for day:	7

Total Num. with Injuries	Total Num. with Helmet	Avg % With a Helmet
150	23	15%

# Harley Spring Rally

Broken By Time Frame





# Harley Spring Rally Medical Incidents

Broken Out by Time of Day

From 5/9/2008 - 5/18/2008

## May 09, 2008

Incidents per hour

7 PM	1
8 PM	2
10 PM	1
11 PM	1

Total for day: 5

## May 10, 2008

Incidents per hour

12 AM	1
1 AM	1
12 PM	1
3 PM	1
4 PM	1
5 PM	1
6 PM	1
8 PM	1
9 PM	1
10 PM	1
11 PM	2

Total for day: 12

## May 11, 2008

Incidents per hour

12 AM	2
2 AM	1
2 PM	1
7 PM	3
8 PM	2
9 PM	5
10 PM	1

Total for day: 15

## May 12, 2008

Incidents per hour

1 AM	1
9 AM	1



# Harley Spring Rally Medical Incidents

Broken Out by Time of Day

From 5/9/2008 - 5/18/2008

1 PM	3
3 PM	1
5 PM	1
6 PM	2
7 PM	1
8 PM	1
9 PM	1
10 PM	1
11 PM	2

Total for day: 15

## May 13, 2008

Incidents per hour

4 AM	1
9 AM	1
11 AM	2
1 PM	1
4 PM	2
6 PM	1
7 PM	1
8 PM	1

Total for day: 10

## May 14, 2008

Incidents per hour

1 PM	2
4 PM	1
5 PM	2
6 PM	1
7 PM	3
8 PM	2
10 PM	1
11 PM	2

Total for day: 14

## May 15, 2008

Incidents per hour

1 AM	1
2 AM	2
3 AM	1
12 PM	2





# Harley Spring Rally Medical Incidents

Broken Out by Time of Day

From 5/9/2008 - 5/18/2008

1 PM	2
2 PM	2
3 PM	1
4 PM	1
5 PM	1
6 PM	2
8 PM	2
9 PM	1
10 PM	2
11 PM	1

Total for day: 21

## May 16, 2008

Incidents per hour

3 AM	1
12 PM	2
1 PM	1
2 PM	1
3 PM	2
4 PM	1
6 PM	1
7 PM	1
8 PM	2
9 PM	1
10 PM	1
11 PM	1

Total for day: 15

## May 17, 2008

Incidents per hour

2 AM	2
4 AM	1
8 AM	1
9 AM	1
10 AM	2
1 PM	1
3 PM	1
4 PM	3
6 PM	2
7 PM	2



# Harley Spring Rally Medical Incidents

Broken Out by Time of Day

From 5/9/2008 - 5/18/2008

8 PM	1
10 PM	3
11 PM	1

Total for day: 21

**May 18, 2008**

Incidents per hour

12 AM	2
2 AM	1
11 AM	1
1 PM	1
6 PM	1
9 PM	1

Total for day: 7

**Grand Total of Medical  
Incidents for Rally: 135**



# Harley Spring Rally Helicopter Transports

Broken Out by Time of Day  
From 5/9/2008 - 5/18/2008

Incident Address

## May 09, 2008

---

8 PM	4636 CANTERBURY DR
10 PM	7601 N KINGS HWY

---

Total for day: 2

## May 10, 2008

---

8 PM	4750 S HWY 17
5 PM	13TH AVE N&N HWY 17

---

Total for day: 2

## May 12, 2008

---

8 PM	3043 S HWY 17 BUS
------	-------------------

---

Total for day: 1

## May 13, 2008

---

4 PM	GRAYSTONE BLVD&HWY 17
------	-----------------------

---

Total for day: 1

## May 14, 2008

---

11 PM	GLENNS BAY RD&N HWY 17 BUS
-------	----------------------------

---

Total for day: 1

## May 16, 2008

---

10 PM	COALITION DR&SOCASTEE BLVD
-------	----------------------------

---

Total for day: 1

## May 17, 2008

---

10 AM	2120 SEA MOUNTAIN HWY
-------	-----------------------

---

Total for day: 1

## May 18, 2008

---

1 PM	9000 N KINGS HWY
------	------------------

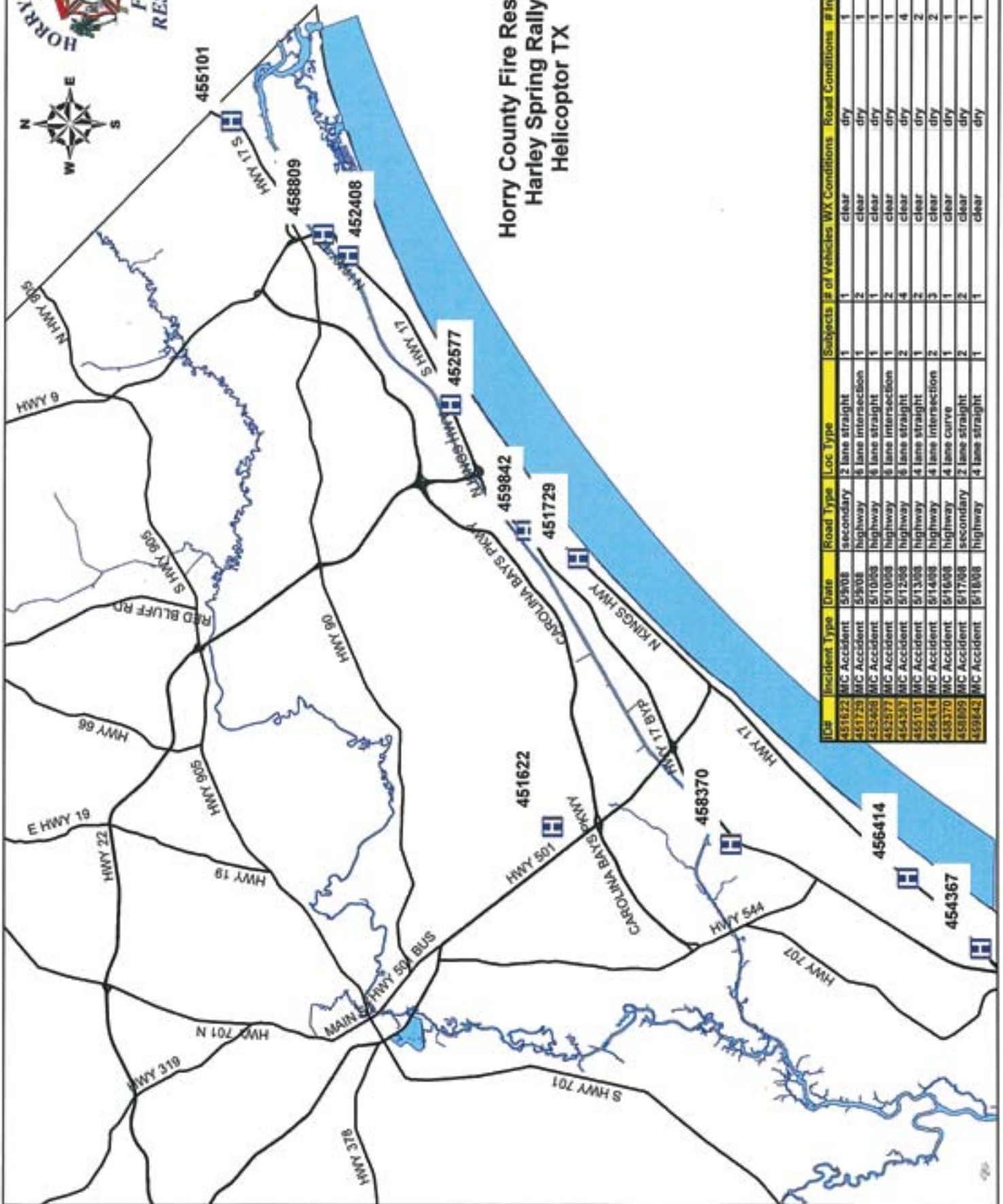
---

Total for day: 1

Grand Total of Helicopter Transports for Rally: 10
---



## Horry County Fire Rescue Harley Spring Rally Helicopter TX



ID#	Incident Type	Date	Road Type	Loc Type	Subjects	# of Vehicles	WX Conditions	Road Conditions	# Injuries	Helmet
451622	MC Accident	5/9/08	secondary	2 lane straight	1	1	clear	dry	1	No
451729	MC Accident	5/9/08	highway	6 lane intersection	1	2	clear	dry	1	No
452528	MC Accident	5/10/08	highway	6 lane straight	1	1	clear	dry	1	Yes
452577	MC Accident	5/10/08	highway	6 lane intersection	1	2	clear	dry	1	No
454337	MC Accident	5/12/08	highway	6 lane straight	2	4	clear	dry	4	No
455101	MC Accident	5/13/08	highway	4 lane straight	1	2	clear	dry	2	Yes
456414	MC Accident	5/14/08	highway	4 lane intersection	2	3	clear	dry	2	No
458370	MC Accident	5/16/08	highway	4 lane curve	1	1	clear	dry	1	No
458399	MC Accident	5/17/08	secondary	2 lane straight	2	2	clear	dry	1	Yes
459642	MC Accident	5/18/08	highway	4 lane straight	1	1	clear	dry	1	Yes



# Harley Spring Rally Fatality Incidents

Broken Out by Time of Day

From 5/9/2008 - 5/18/2008

Incident Address

Incidents per hour

## May 10, 2008

---

10 PM	8901 N HWY 17 BYP	1
-------	-------------------	---

---

Total for day: 1

## May 11, 2008

---

12 AM	8TH AVE N&N KINGS HWY	1
-------	-----------------------	---

---

Total for day: 1

## May 17, 2008

---

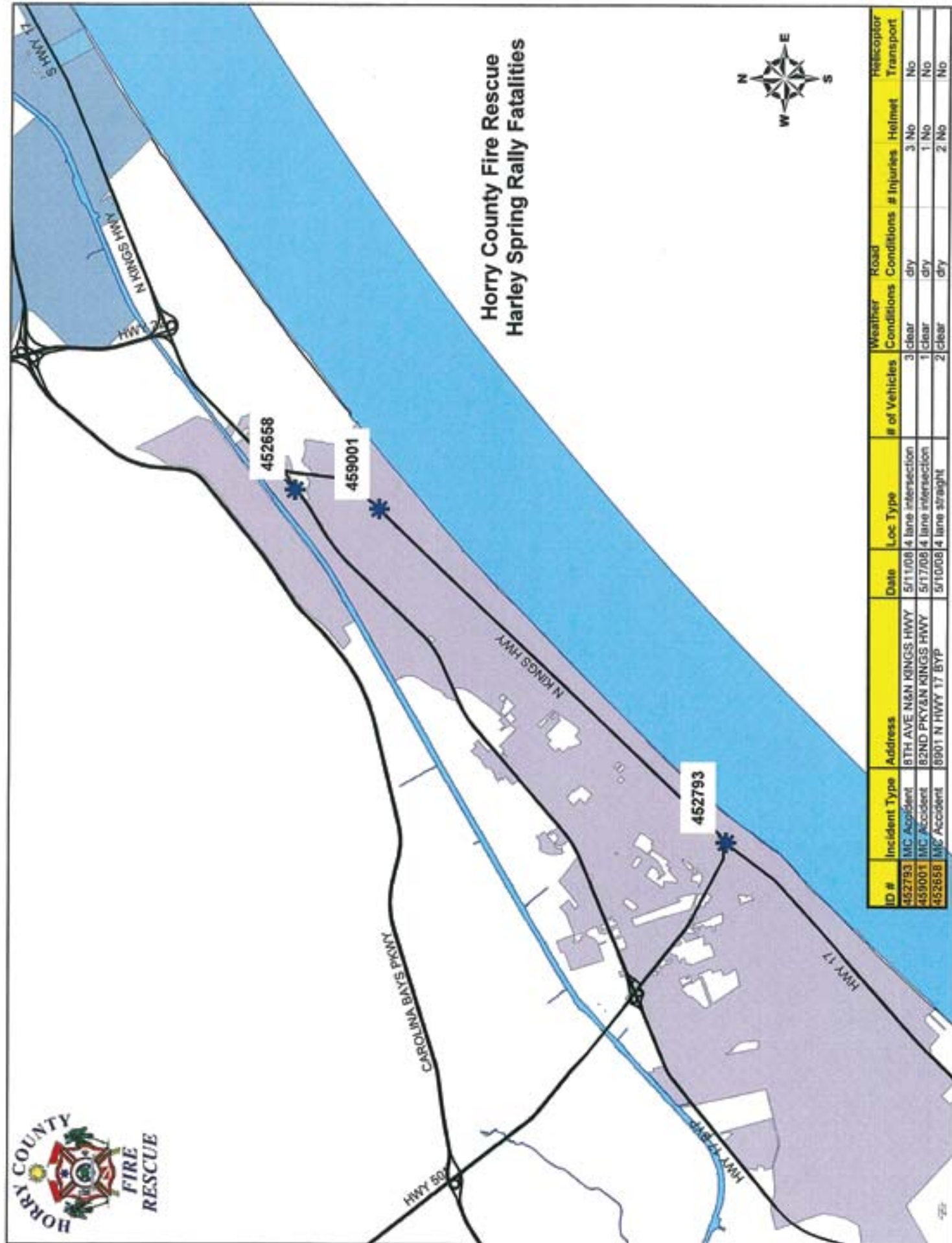
3 PM	82ND PKY&N KINGS HWY	1
------	----------------------	---

---

Total for day: 1

Grand Total of Fatalities for Rally: 3
---

# Horry County Fire Rescue Harley Spring Rally Fatalities



ID #	Incident Type	Address	Date	Loc. Type	# of Vehicles	Weather	Road Conditions	# Injuries	Helmet	Helicopter Transport
452793	MC Accident	8TH AVE N&N KINGS HWY	5/11/08	4 lane intersection	3	clear	dry	3	No	No
459001	MC Accident	82ND PKY&N KINGS HWY	5/17/08	4 lane intersection	1	clear	dry	1	No	No
452658	MC Accident	8901 N HWY 17 BYP	5/10/08	4 lane straight	2	clear	dry	2	No	No



**APPENDIX F**  
**AB Festival – Medical Response Summary**

During the AB Festival, HC F/R responded to 118 motorcycle incidents. These are in addition to our regular call volume. In an attempt to maximize our resources, we capture and analyze the motorcycle accident data. The specific tabs are listed below:

- Tab 1: Road Type Analysis. We list the road descriptions, to determine any trends regarding location of motorcycle incidents.
- Tab 2: Contract Ambulance Utilization. This is a chart showing the days and number of hours we had contract ambulances and the number of hours they were engaged in actual emergency response operations.
- Tab 3: Incidents by Day. This is a chart showing the number of motorcycle incidents per day of the AB Festival.
- Tab 4: Injuries by Day. This is a chart showing the number of motorcycle incident injuries per day of the AB Festival, including the percentage of victims wearing a helmet. We did not quantify the severity of injuries in this chart.
- Tab 5: Incidents by Hour. This is a chart showing the number of motorcycle incidents that occurred each hour of the AB Festival.
- Tab 6: Incidents by Day by Hour. This is an analysis showing the number of motorcycle incidents that occurred each hour, of each day, of the AB Festival.
- Tab 7: Helicopter Transport Analysis. This is a chart showing the number of motorcycle incident patients that required helicopter transport to a Level 1 Trauma Center.
- Tab 8: Helicopter Transport Map. This is a map showing the locations of the motorcycle incidents that required a helicopter transport to a Level 1 Trauma Center.
- Tab 9: Fatal Incidents Analysis. This is a chart showing the number of motorcycle incidents that resulted in a fatality.
- Tab 10: Fatal Incidents Map. This is a map showing the locations of the motorcycle incidents that resulted in a fatality.

This appendix is intended to address motorcycle accidents only. It is very possible that AB Festival participants might have been involved in a non-motorcycle accident, which would not be included in this report. In addition, care must be taken to make generalizations based on a single years' data.



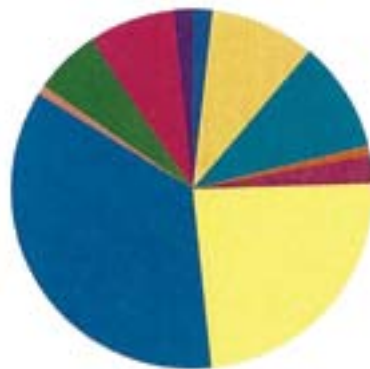
# Atlantic Beach Festival Motorcycle Incidents

From 5/22/2008 - 5/26/2008

2 lane curve	2
2 lane intersection	11
2 lane straight	12
4 lane cloverleaf	1
4 lane curve	3
4 lane intersection	28
4 lane straight	42
6 lane curve	1
6 lane intersection	7
6 lane straight	9
Parking Lot	2

## Incident Type Road Location Breakdown

(For Motorcycle Wrecks Only)



2 lane curve	1.7%
2 lane intersection	9.3%
2 lane straight	10.2%
4 lane cloverleaf	0.8%
4 lane curve	2.5%
4 lane intersection	23.7%
4 lane straight	35.0%
6 lane curve	0.8%
6 lane intersection	5.9%
6 lane straight	7.6%
Parking Lot	1.7%
<b>Total:</b>	<b>100.0%</b>



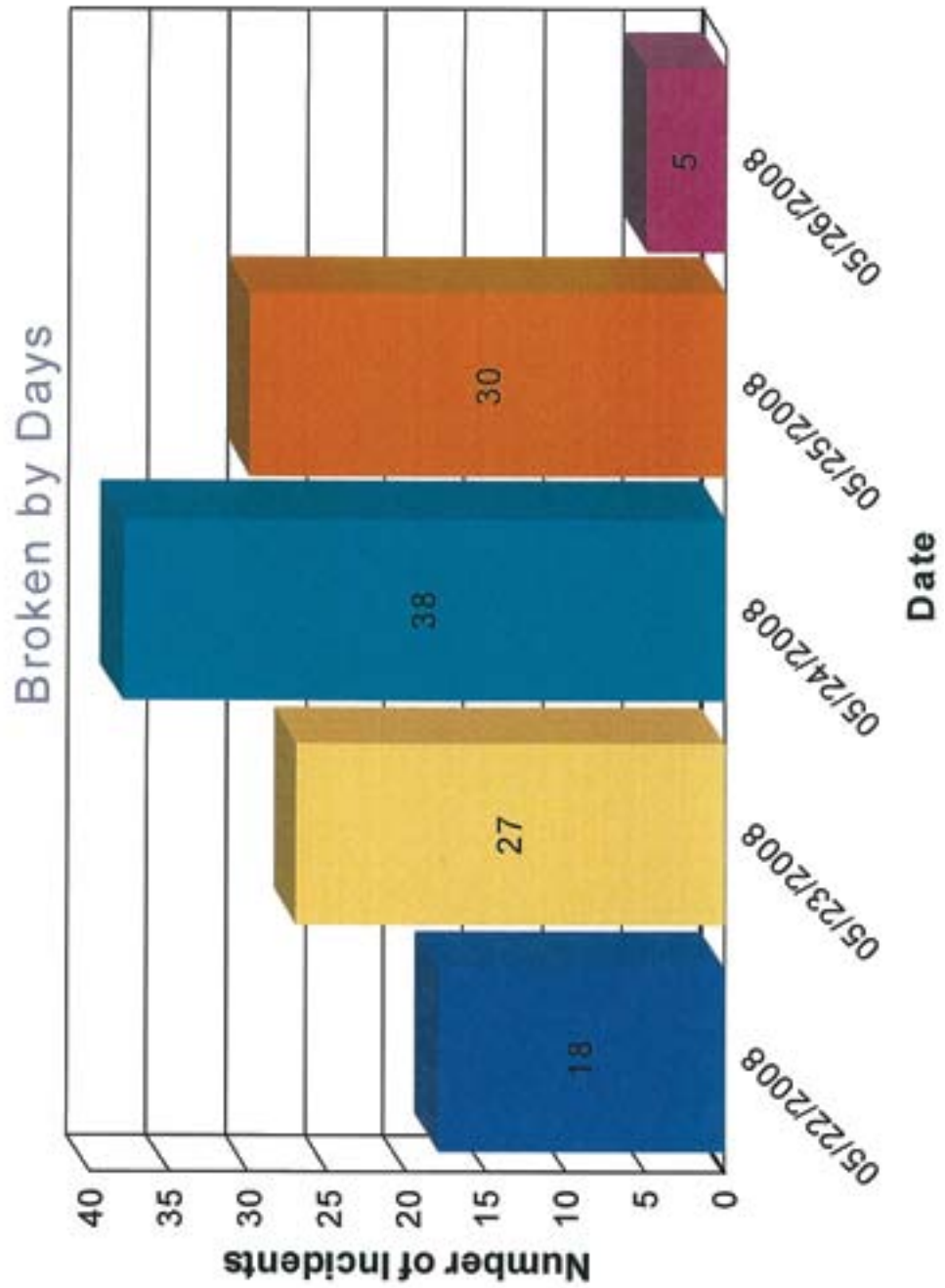
**APPENDIX F**

**Tab 2 – Contract Ambulance Utilization**

During the AB Festival, HC F/R contracted for additional ambulances. This chart shows the relationship between the number of hours contracted, and the hours actually engaged in emergency response activities. These ambulances responded to any calls for service, and were not limited to just motorcycle incidents. While there were a very few days where the contracted ambulances were not critical to our operations, most days justified their utilization.

<b>May 2008</b>						
				<b>22</b> Contract Hrs: 38  Utilization Hrs: 7.75	<b>23</b> Contract Hrs: 50  Utilization Hrs: 19.75	<b>24</b> Contract Hrs: 50  Utilization Hrs: 16.25
<b>25</b> Contract Hrs: 38  Utilization Hrs: 6	<b>26</b> Contract Hrs: 24  Utilization Hrs: 7.25					

# Atlantic Beach Festival





# Atlantic Beach Festival Motorcycle Accident Incidents

Comparing People to Helmets

From 5/22/2008 - 5/26/2008

**May 22, 2008**

Total injuries for day: 16

---

**May 23, 2008**

Total injuries for day: 34

---

**May 24, 2008**

Total injuries for day: 40

---

**May 25, 2008**

Total injuries for day: 32

---

**May 26, 2008**

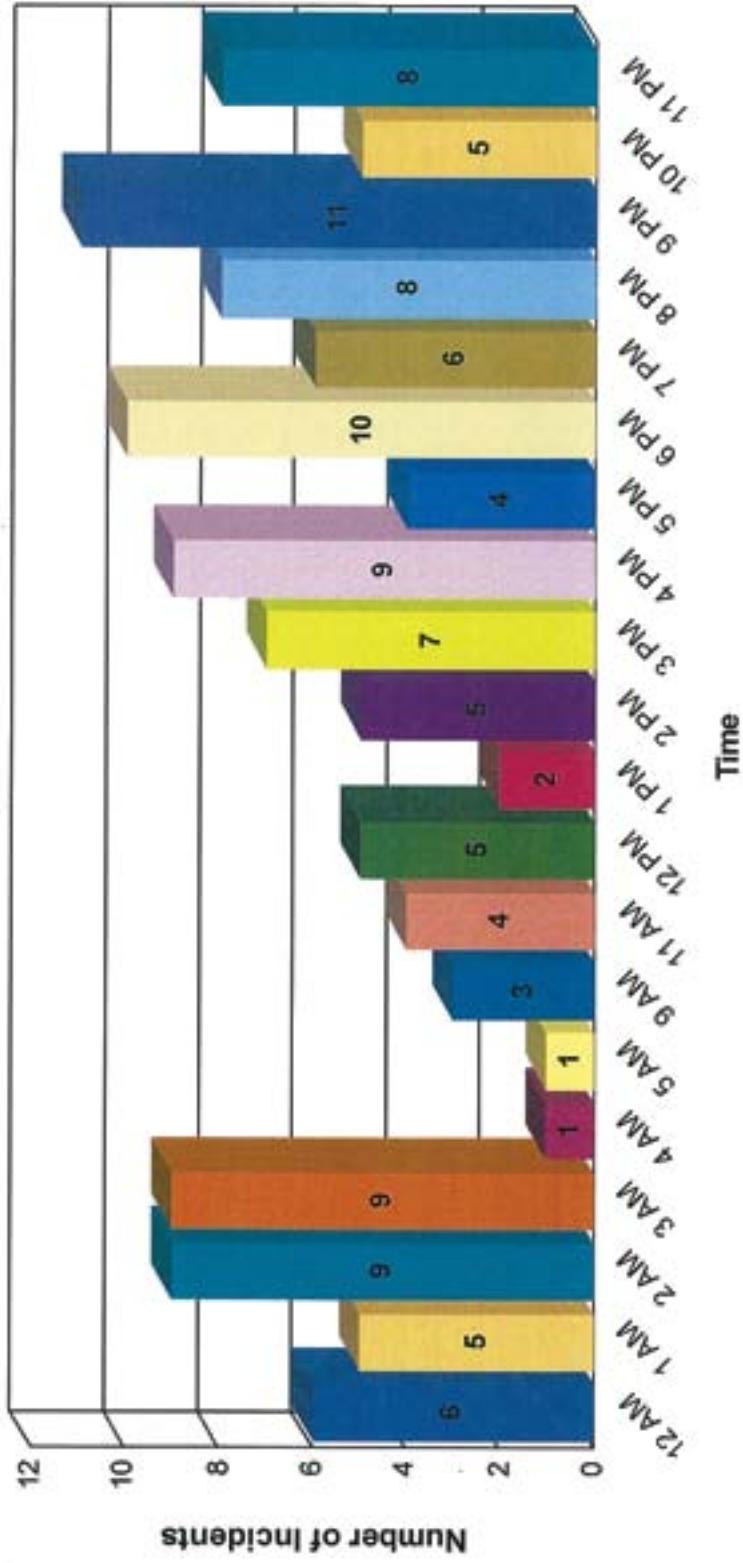
Total injuries for day: 6

---

Total Num. with Injuries	Total Num. with Helmet	Avg % with No Helmet
128	6	5%

# Atlantic Beach Festival

Broken By Time Frame





# Atlantic Beach Festival Medical Incidents

Broken Out by Time of Day

From 5/22/2008 - 5/26/2008

## May 22, 2008

Incidents per hour

9 AM	2
4 PM	3
5 PM	1
6 PM	4
7 PM	5
8 PM	1
9 PM	1
11 PM	1

Total for day: 18

## May 23, 2008

Incidents per hour

12 AM	1
2 AM	4
3 AM	2
11 AM	3
2 PM	1
3 PM	3
4 PM	1
5 PM	1
8 PM	3
9 PM	5
10 PM	1
11 PM	2

Total for day: 27

## May 24, 2008

Incidents per hour

12 AM	2
1 AM	1
2 AM	2
3 AM	3
5 AM	1
12 PM	4
1 PM	1



# Atlantic Beach Festival Medical Incidents

Broken Out by Time of Day

From 5/22/2008 - 5/26/2008

2 PM	2
3 PM	2
4 PM	3
6 PM	3
7 PM	1
8 PM	3
9 PM	4
10 PM	4
11 PM	2

Total for day: 38

## May 25, 2008

Incidents per hour

12 AM	3
1 AM	3
2 AM	3
3 AM	4
4 AM	1
11 AM	1
1 PM	1
2 PM	2
3 PM	2
4 PM	2
5 PM	1
6 PM	3
8 PM	1
11 PM	3

Total for day: 30

## May 26, 2008

Incidents per hour

1 AM	1
9 AM	1
12 PM	1
5 PM	1
9 PM	1

Total for day: 5

**Grand Total of Medical  
Incidents for Rally: 118**



# Atlantic Beach Festival Helicopter Transports

Broken Out by Time of Day  
From 5/22/2008 - 5/26/2008

Incident Address

**May 24, 2008**

---

4 PM	3300 HWY 501
------	--------------

---

Total for day: 1

**May 25, 2008**

---

11 PM	1501 S OCEAN BLVD
-------	-------------------

---

3 PM	1721 N HWY 17
------	---------------

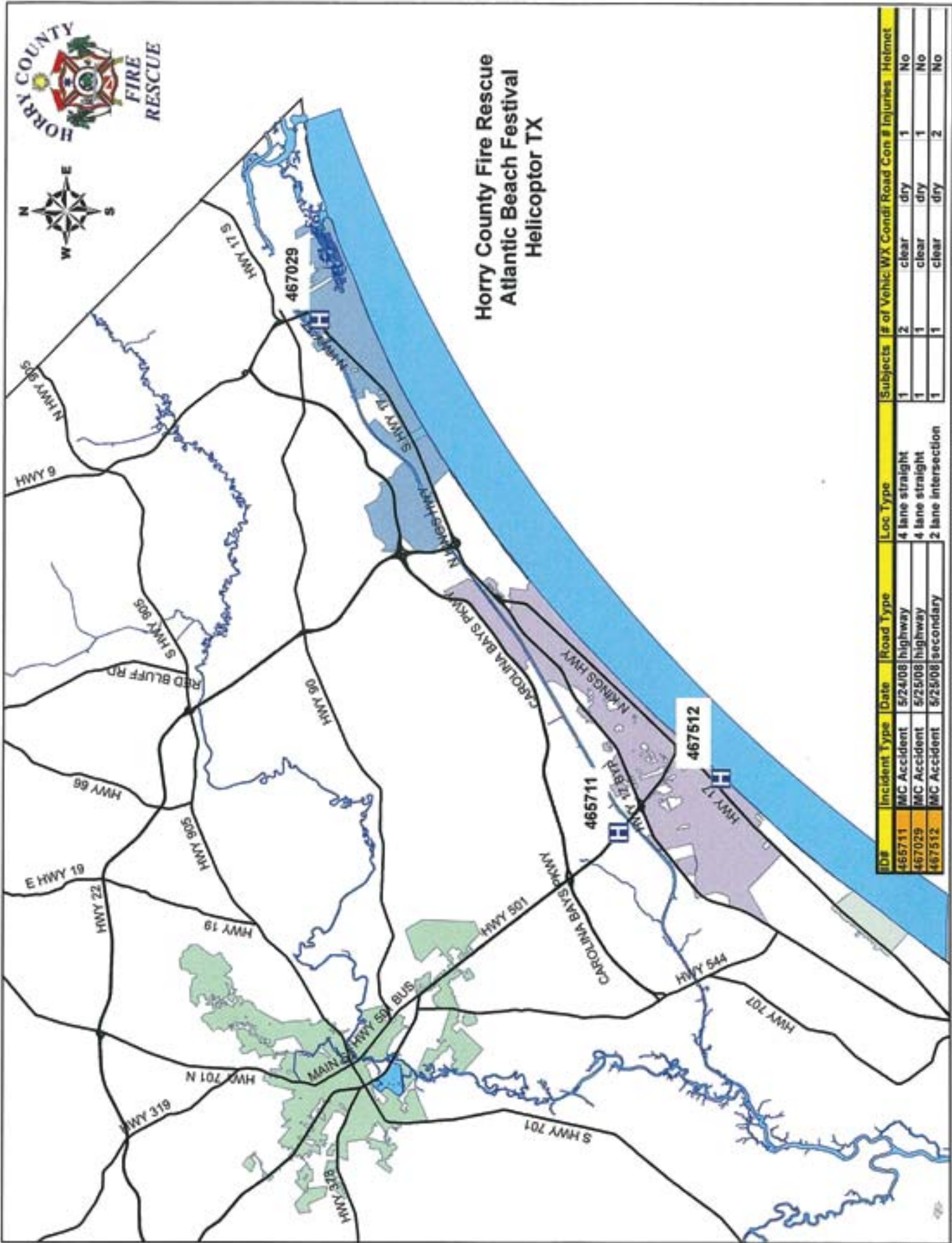
---

Total for day: 2

<b>Grand Total of Helicopter Transports for Rally: 3</b>
--



## Horry County Fire Rescue Atlantic Beach Festival Helicopter TX



ID#	Incident Type	Date	Road Type	Loc. Type	Subjects	# of Vehicle	WX Condi	Road Con	# Injuries	Helmet
465711	MC Accident	5/24/08	highway	4 lane straight	1	2	clear	dry	1	No
467029	MC Accident	5/25/08	highway	4 lane straight	1	1	clear	dry	1	No
467512	MC Accident	5/25/08	secondary	2 lane intersection	1	1	clear	dry	2	No





# Atlantic Beach Festival Fatality Incidents

Broken Out by Time of Day

From 5/22/2008 - 5/26/2008

Incident Address

Incidents per hour

**May 22, 2008**

---

6 PM

FARROW PKY&HOWARD AVE

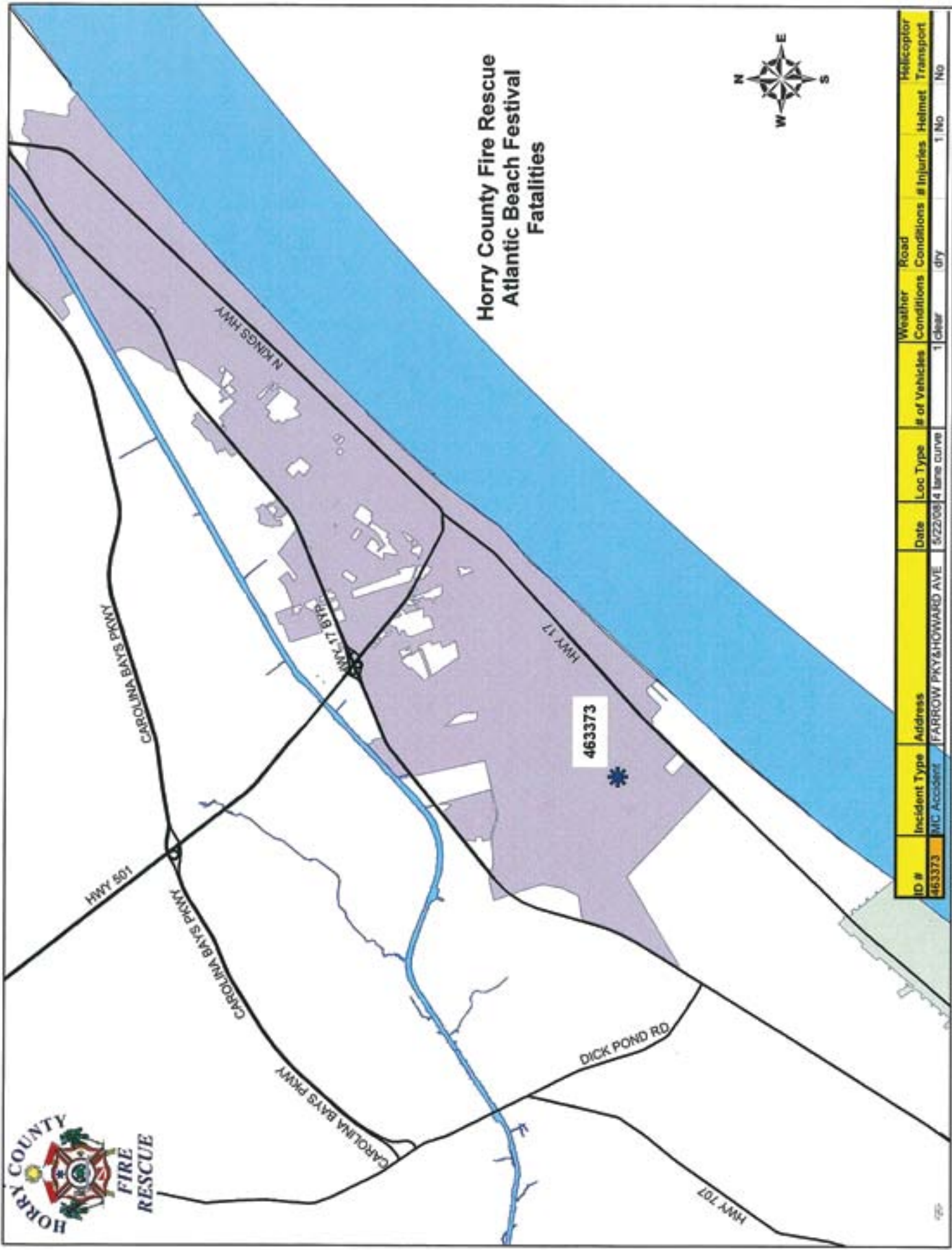
1

---

Total for day: 1

**Grand Total of  
Fatalities for Rally: 1**

# Horry County Fire Rescue Atlantic Beach Festival Fatalities



ID #	Incident Type	Address	Date	Loc Type	# of Vehicles	Weather Conditions	Road Conditions	Helicopter
463373	MC Accident	FARROW PKY&HOWARD AVE	5/22/08	4 lane curve	1	clear	dry	1 No
								1 No

**APPENDIX G**  
**E911 Call Volume**

Weekend Comparisons												
Friday, Saturday and Sunday Numbers												
Telephone Stats					Calls Dispatched							
Date	911	7 Digit	Outbnd	Total In 911RngTm	HCPD	Rescue	Fire	Other	PD	Total		
05/03 thru 05/05/02	1,761	3,925	1,058	5,686	793	230	80	60	60	1,163		For Comparison
05/10 thru 05/12/02	1,770	4,388	1,519	6,158	1,048	230	99	85	85	1,462		Mother's Day Wkend
05/17 thru 05/19/02	1,986	4,958	1,435	6,944	996	317	119	64	64	1,496		Harley-D Weekend
05/24 thru 05/26/02	3,256	5,748	1,838	9,004	1,826	451	166	51	51	2,494		Memorial Weekend
05/02 thru 05/04/03	1,827	4,054	1,260	5,881	891	237	87	48	48	1,263		For Comparison
05/09 thru 05/11/03	1,789	4,660	1,848	6,449	1,141	302	126	63	63	1,632		Mother's Day Wkend
05/16 thru 05/18/03	1,878	4,925	1,422	6,803	1,009	320	122	66	66	1,517		Harley-D Weekend
05/23 thru 05/25/03	2,328	6,145	1,919	8,473	1,787	424	145	94	94	2,450		Memorial Weekend
04/30 thru 05/02/04	2,406	3,259	828	5,665	845	284	113	38	38	1,280		For Comparison
05/07 thru 05/09/04	2,267	4,399	1,711	6,666	1,020	307	138	66	66	1,531		Mother's Day Wkend
05/14 thru 05/16/04	2,376	3,894	1,187	6,270	1,408	487	188	83	83	2,166		Harley-D Weekend
05/28 thru 05/30/04	3,100	4,822	1,301	7,922	1,536	418	160	141	141	2,255		Memorial Weekend
05/06 thru 05/08/05	1,662	2,658	1,006	4,320	912	243	96	60	60	1,311		Mother's Day Wkend
05/13 thru 05/15/05	1,885	3,114	1,283	4,999	1,050	335	142	62	62	1,589		1st Harley Weekend
05/20 thru 05/22/05	2,090	3,433	1,667	5,523	1,142	374	165	72	72	1,753		Harley-D Weekend
05/27 thru 05/29/05	2,974	3,718	1,532	6,692	1,350	456	139	108	108	2,053		Memorial Weekend
05/05 thru 05/07/06	2,320	2,639	1,538	4,959	997	313		56	56	1,366		For Comparison
05/12 thru 05/14/06	1,947	3,132	1,385	5,079	1,323	341		61	61	1,725		Mother's Day Wkend
05/19 thru 05/21/06	2,182	3,348	1,781	5,530	1,271	400		47	47	1,718		2nd Harley Weekend
05/26 thru 05/28/06	3,399	4,125	1,739	7,524	1,640	535		141	141	2,316		Memorial Weekend
05/04 thru 05/06/07	1,837	2,842	1,565	6,244	1,227	341		37	37	1,605		For Comparison
05/11 thru 05/13/07	1,945	2,960	1,634	6,539	1,426	379		59	59	1,864		Mother's Day Wkend
05/18 thru 05/20/07	2,262	3,281	2,070	7,613	1,507	473		45	45	2,025		Harley-D Weekend
05/25 thru 05/27/07	3,518	3,922	1,734	9,174	1,876	598		73	73	2,547		Memorial Weekend
05/02 thru 05/04/08	1,964	2,418	1,496	5,878	1,173	354		62	62	1,633		For Comparison
05/09 thru 05/11/08	2,153	2,709	1,812	6,674	1,463	396		49	49	1,937		Mother's Day Wkend
05/16 thru 05/18/08	2,188	2,719	1,793	6,700	1,402	423		60	60	1,919		Harley-D Weekend
05/23 thru 05/25/08	3,609	3,320	2,122	9,051	1,821	553		84	84	2,487		Memorial Weekend

**APPENDIX H  
HD Rally Vendor Permits**

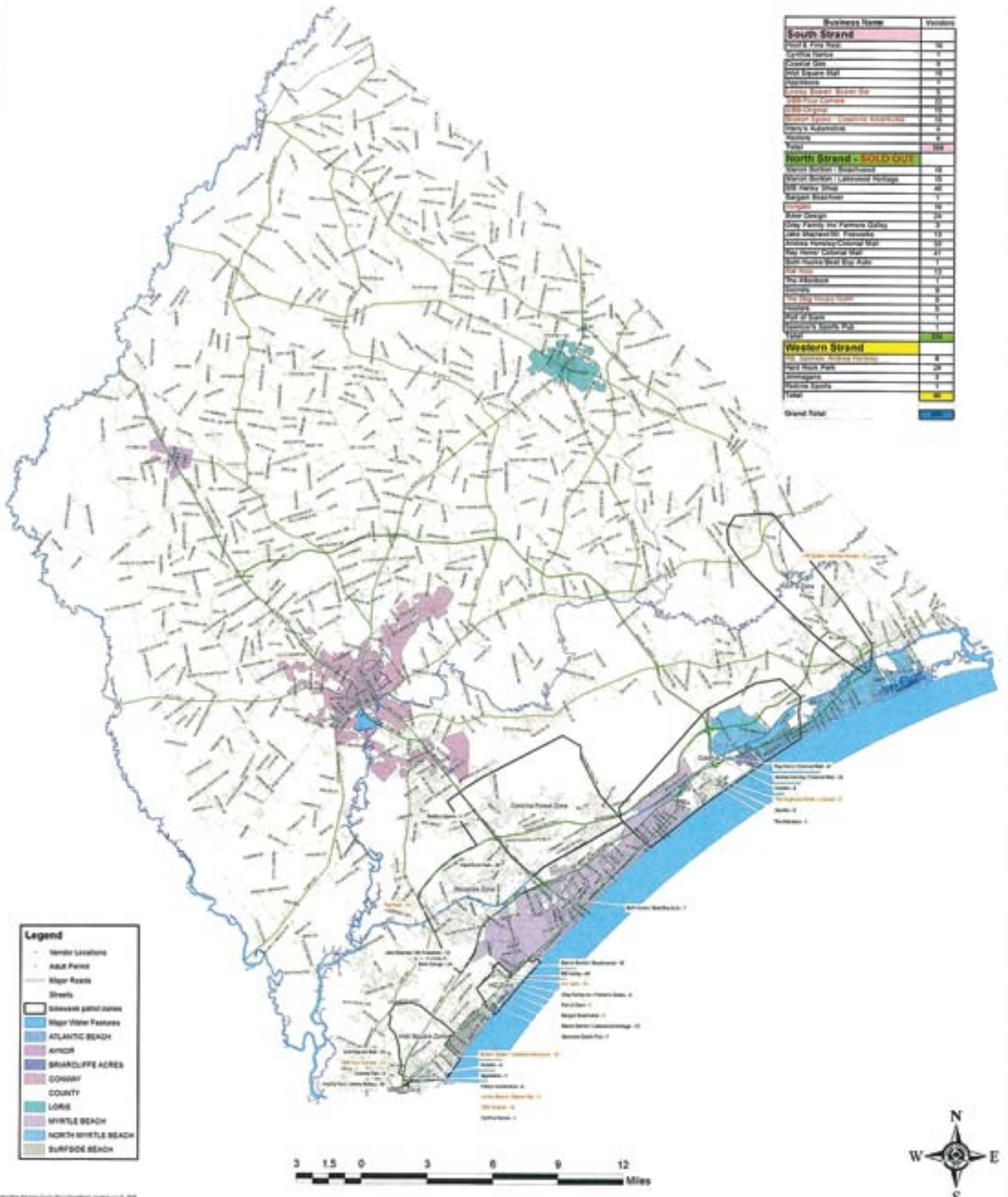
Business Name	TMS#	Location	Vendors	Mrchnt	Info Booth	Non Profit	Displays	Signs	ATM's	Adult	RV's
<b>South Strand</b>										Entt	
Hoof & Fins Rest.	197-00-01-033	3417 HWY17 BUS	16								
Cynthia Nance	197-00-01-041	3463 Hwy 17 B MI	1								
Coastal Gas	197-00-01-081	3411 Hwy 17 B MI	5								
Inlet Square Mall	194-00-04-013	10125 Hwy 17 B MI	15		2	2	1	1			1
Inlet Square Mall	194-00-04-049	10125 Hwy 17 B MI						1			
Applebee's	194-00-04-082	3256 Hwy 17 Bus. MI	1								1
Eagles Beachwear	195-14-06-001	101 Waccamaw Dr GC		1							
Lesley Beaver/ Beaver Bar	197-00-01-035	3381 Hwy 17 Bus MI	5	1	1	1				1	
SBB/Four Corners	194-00-05-001	11980 Hwy 17 Bypass	22	1	2	2	3			1	9
SBB/Original	197-00-01-036	3393 Hwy 17 Bus	15	1	1	1				1	
Broken Spoke/Coastline Adventures	195-05-01-018	2340 Hwy 17 S GC	16			1				1	2
Remedies	179-28-01-019	4803 Hwy 17 Bypass MI		1							
Krystal Burger	194-00-04-017	3120 Hwy 17 Bus MI		1							
S. Strand Assembly of God	197-00-01-044	3507 Hwy 17 S MI				1					
Sun Beach Wear	197-17-01-021	3151 Hwy 17 S MI		1							
Harry's Automotive	197-17-01-018	3167 Hwy 17 S MI	4	1							2
Hooters	194-00-04-067	852 Mall Dr MI	4				1				4
		<b>Total Counts</b>	<b>104</b>	<b>8</b>	<b>2</b>	<b>8</b>	<b>5</b>	<b>2</b>	<b>0</b>	<b>4</b>	<b>19</b>
<b>Business Name</b>	<b>TMS#</b>	<b>Location</b>	<b>Vendors</b>	<b>Mrchnt</b>	<b>Info Booth</b>	<b>Non Profit</b>	<b>Displays</b>	<b>Signs</b>	<b>ATM's</b>	<b>Adult</b>	<b>RV's</b>
<b>North Strand - SOLD OUT</b>										Entt	
Bargain Beachwear #4	155-14-02-032	9709 N Kings Hwy MB		1							
Marion Benton / Beachwood	186-00-01-012	3900 S. Kings Hwy MB	18			1					
Marion Benton / Lakewood Heritage	192-00-01-033	5837 S. Kings Hwy MB	15	1		1					3
MB Harley Shop	186-00-01-016	4710 S. Kings Hwy MB	46		1	4					
Bargain Beachwear	192-00-01-001	5720 S. Kings Hwy MB	1								
Irongate	186-00-01-006	4800 S. Kings Hwy MB	16	1				1		1	1
Biker Design	186-00-01-034	4800 Hwy 17 Bus S MB	24			1			3		3
Goobers 52	155-10-01-005	9924 N Kings Hwy MB		1							
Heads Up Tails Down	186-14-07-002	4735 S Kings Hwy				1					
Gray Family Inv/ Farmers Galley	186-00-01-020	5301 Hwy 17 S MB	4								
Fantails	172-00-03-032	3506 Hwy 501 MB		1							1
Eagles Beachwear	155-14-04-004	9711 N Kings Hwy MB		1							

**APPENDIX H  
HD Rally Vendor Permits**

Business Name	TMS#	Location	Vendors	Mrchnt	Info	Non Profit	Displays	Signs	ATM's	Adult	RV's
Jake Mazrawi/Mr. Fireworks	186-00-01-033	4720 Hwy 17 MB	13				1				
Andrea Hensley/Colonial Mall	155-00-01-012	10177 Hwy 17 MB	33	6	1	5		1			16
Ray Herro/ Colonial Mall	155-00-01-012	10177 Hwy 17 MB	40	13			2				26
Beth Hucks/Best Buy Auto	181-01-01-007	1432 Hwy 501	1	1							
Chabad Lubavitch of MB	186-00-01-457	Beside Inrrogate Saloon				1					
Rat Hole	179-00-06-031	3833 Socastee Blvd MB	13			1		1		1	6
Red Barn Tavern	180-06-01-016	2635 Hwy 17 Bypass MB		1			1			1	
The Afterdeck	155-14-01-002	9719 N Kings Hwy MB	1								1
Secrets	155-14-03-002	9734 N Kings Hwy MB	9								
The Dog House North	155-14-03-003	9814 N Kings Hwy MB	9	1			1	1		1	
Hookers	155-00-01-020	10133 N. Kings Hwy, MB	5								1
Port of Siam	186-00-01-004	5400 Hwy 17 S. M.B.	1				4				1
Spencer's Sports Pub	191-00-01-110	5910 Hwy 17 Bus. MB	1	1			4				1
		<b>Total Counts</b>	<b>250</b>	<b>28</b>	<b>2</b>	<b>15</b>	<b>9</b>	<b>4</b>	<b>5</b>	<b>5</b>	<b>55</b>
Business Name	TMS#	Location	Vendors	Mrchnt	Info	Non Profit	Displays	Signs	ATM's	Adult	RV's
<b>Western Strand</b>					Booth					Ent	
HB Spokes/ Andrea Hensley	102-00-03-026	1111 Hwy 9 W Longs	8		1	2		1		1	1
Hard Rock Park	172-00-05-015	211 George Bishop Pkwy	28	2	2	5	23	1			12
MB Community Church	172-00-05-220	557 George Bishop Pkwy				1					
Jimmigans	118-00-02-110	2551 Hwy 17 LR	3	1							
Nutlitt Butt Horseplay	172-00-05-009	3521 Hwy 501 MB		1							
Redline Sports	162-00-01-122	4663 Hwy 501 MB	1		1	1		1			1
		<b>Total Counts</b>	<b>40</b>	<b>4</b>	<b>4</b>	<b>9</b>	<b>23</b>	<b>3</b>	<b>0</b>	<b>1</b>	<b>14</b>
		<b>Grand Total Counts</b>	<b>394</b>	<b>40</b>	<b>8</b>	<b>32</b>	<b>37</b>	<b>9</b>	<b>5</b>	<b>10</b>	<b>88</b>



# 2008 HD Bikeweeks Patrol Zones & Vendors



Business Name	Vendors
<b>South Strand</b>	
Don's Fine Arts	16
Synthia Vance	1
Crested Glen	1
Old Square Mall	1
Charmaine	1
Chick's Sweet Shoppe	1
Old Blue Cottage	1
Old Original	1
Edith's Place - Coastal Antiques	1
Shirley's Antiques	1
Yvonne	1
<b>Total</b>	<b>26</b>
<b>North Strand - P.O. 2002001</b>	
Barbara's Emporium	16
Barbara's Emporium - Lighthouse Antiques	16
Bill Henry Shop	1
Bryan's Beachcomber	1
Charmaine	1
Blue Design	1
Clay Family and Partners Gifts	1
Coastal Antiques - P.O. 2002001	1
Andrea Henley-Castellani Mall	1
May Henry Coastal Mall	1
South Strand Best Buy Kids	1
Old Square	1
Old Square	1
Old Square	1
Old Square	1
Old Square	1
Old Square	1
Old Square	1
Old Square	1
Old Square	1
Old Square	1
<b>Total</b>	<b>36</b>
<b>Western Strand</b>	
Barbara's Emporium	1
Bill Henry Shop	1
Charmaine	1
Charmaine	1
Charmaine	1
Charmaine	1
Charmaine	1
Charmaine	1
Charmaine	1
<b>Total</b>	<b>7</b>
<b>Grand Total</b>	<b>69</b>

**APPENDIX I  
AB Festival Vendor List**

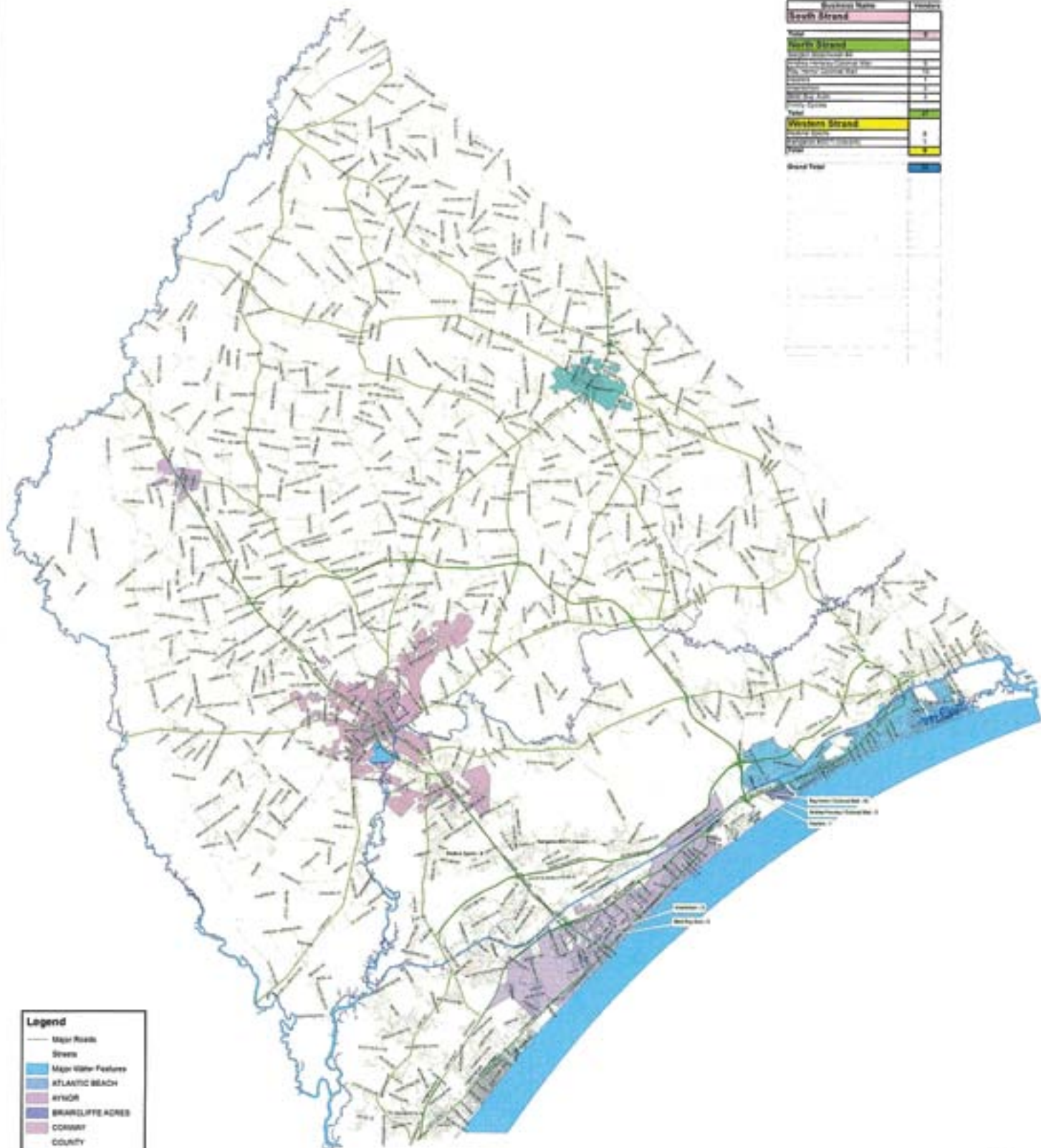
Business Name	TMS#	Location	Vendors	Merchant	Info	Non-Profit	Displays	Signs	ATM's	Adult	RV's
<b>South Strand</b>											
		Total	0	0	0	0	0	0	0	0	0
<b>North Strand</b>											
Bargain Beachwear #4	155-14-02-032	9709 N Kings Hwy MB	1								
Andreal Colonial Mall	155-00-01-012	10177 Hwy 17 MB	5	3	2	2	5				4
Ray / Colonial Mall	155-00-01-012	10177 Hwy 17 MB	15				2				13
Hooters/Colonial Mall	155-00-01-020	10133 N. Kings Hwy MB	1								
Intersecion	181-01-01-007	1430 Hwy 501	3	1							
Best Buy Auto	181-01-01-006	1432 Hwy 501	3								
Trinity Cycles	181-01-02-070	1505 Hwy 501 MB	1								1
		Total	27	6	2	2	7	0	0	0	18
<b>Western Strand</b>											
Redline Sports	162-00-01-122	4663 Hwy 501 MB	8		2	2	4	1			5
Kangaroo #3071(Vacant)	163-00-01-062	4408 Hwy 501 MB	1								
		Total	9	8	4	4	4	1	0	0	5
		Total Permits	36	14	6	6	11	1	0	0	23



# 2008 Atlantic Beach Festival Vendors



Business Name	Vendors
<b>South Strand</b>	
Name	1
Address	
City	
State	
Zip	
Phone	
Website	
Other	
<b>North Strand</b>	
Name	1
Address	
City	
State	
Zip	
Phone	
Website	
Other	
<b>Western Strand</b>	
Name	1
Address	
City	
State	
Zip	
Phone	
Website	
Other	
<b>Grand Total</b>	<b>4</b>



- Legend**
- Major Roads
  - Streets
  - Major Water Features
  - ATLANTIC BEACH
  - MYRTLE BEACH
  - BRANDLIFTE ACRES
  - CORWAY
  - COUNTY
  - LORE
  - MYRTLE BEACH
  - NORTH MYRTLE BEACH
  - SURFSIDE BEACH





**APPENDIX J**  
**Temporary Vending Historical Review**

1. HD Rally Review. This chart displays the number of Temporary Vending Permits issued by Horry County during the HD Rally for the past 6 years.

	<u>2008</u>	<u>2007</u>	<u>2006</u>	<u>2005</u>	<u>2004</u>	<u>2003</u>
North	250	250	243	205	200	163
South	104	131	150	149	150	120
West	40	22	18	19	22	9
<b>TOTAL</b>	<b>394</b>	<b>403</b>	<b>411</b>	<b>373</b>	<b>372</b>	<b>292</b>

2. AB Festival Review. This chart displays the number of Temporary Vending Permits issued by Horry County during the AB Festival for the past 6 years.

	<u>2008</u>	<u>2007</u>	<u>2006</u>	<u>2005</u>	<u>2004</u>	<u>2003</u>
North	27	39	15	1	5	12
South	0	0	0	0	0	0
West	9	19	10	14	6	7
<b>TOTAL</b>	<b>36</b>	<b>58</b>	<b>25</b>	<b>15</b>	<b>11</b>	<b>19</b>

**APPENDIX K**  
**2008 Revenue & Expense Analysis**

1. Expenses. The 2008 Spring Biker Festivals' Expenses are broken down into two major components, Personnel Expenses and Contractual Expenses.
  - a. Personnel Expenses. These expenses are specifically for direct costs associated with non-exempt overtime staffing for the festivals. To be accounted for, the staff members must have been assigned a role IAW the appropriate Incident Action Plans.

	<u>HD Rally</u>	<u>AB Festival</u>	<u>TOTAL</u>
HC Police Department	116,810.18	93,427.01	210,237.19
HC Fire / Rescue	4,025.17	5,497.03	9,522.20
HC E911	2,333.02	1,132.80	3,465.82
HC Sheriff's Office	2,491.08	10,739.52	13,230.60
HC Detention Center	18,499.42	22,246.02	40,745.44
Emergency Management	447.53	114.37	561.90
<b>TOTAL</b>	<b>\$144,606.40</b>	<b>\$133,156.75</b>	<b>\$277,763.15</b>

- b. Contractual Expenses. These expenses include Contracted Ambulance Support (Fire/Rescue), Contracted Air Support (Police) and EOC Operations (Emergency Management).

	<u>HD Rally</u>	<u>AB Festival</u>	<u>TOTAL</u>
HC Fire / Rescue	19,200.00	9,600.00	29,100.00
HC Police	10,165.62	6,374.86	12,319.00
HC EMD	6,376.99	986.91	3,618.90
<b>TOTAL</b>	<b>\$35,742.61</b>	<b>\$16,961.77</b>	<b>\$45,037.90</b>

- c. Expense Summary

	<u>HD Rally</u>	<u>AB Festival</u>	<u>TOTAL</u>
Personnel Expenses	144,606.40	133,156.75	277,763.15
Contractual Expenses	35,742.61	16,961.77	52,704.38
<b>TOTAL</b>	<b>\$180,349.01</b>	<b>\$150,118.52</b>	<b>\$330,467.53</b>

2. Revenue. The revenue to support the Spring Biker Festivals is funded from 2 sources.
- Local Accommodations Tax. In the FY 2008 Budget, Horry County Council designated ½ of the “Local Accommodations Tax” to be spent on “tourist related” public safety operations. These funds were used to pay the Personnel Expenses and the Contractual Expenses associated with both Festivals.
  - HD Rally Vendor Fees. The County allows for the purchase of Temporary Vending Permits, and associated permits. All revenues from these permits are deposited into the County General Fund. These are broken into the following components:

ITEM	\$ EACH	# SOLD 2008 HD Rally	TOTAL REVENUE
Hawker & Peddlers	\$100	394	39,400
10-Day Vendor Permit	\$700	394	275,000
Display Only Permit	\$50	37	1,850
Temporary Sign Permits	\$10	9	90
RV Parking Permits	\$50	88	4,400
ATM Permits	\$50	5	250
Adult Entertainment	\$250	10	2,500
<b>TOTAL</b>			<b>\$323,490</b>

- AB Festival Vendor Fees. The County allows for the purchase of Temporary Vending Permits, and associated permits. All revenues from these permits are deposited into the County General Fund. These are broken into the following components:

ITEM	\$ EACH	# SOLD 2008 AB Festival	TOTAL REVENUE
Hawker & Peddlers	\$100	36	3,600
5-Day Vendor Permit	\$400	36	14,400
Display Only Permit	\$50	11	550
Temporary Sign Permits	\$10	1	10
RV Parking Permits	\$50	23	1,150
ATM Permits	\$50	0	0
Adult Entertainment	\$250	0	0
<b>TOTAL</b>			<b>\$19,710</b>